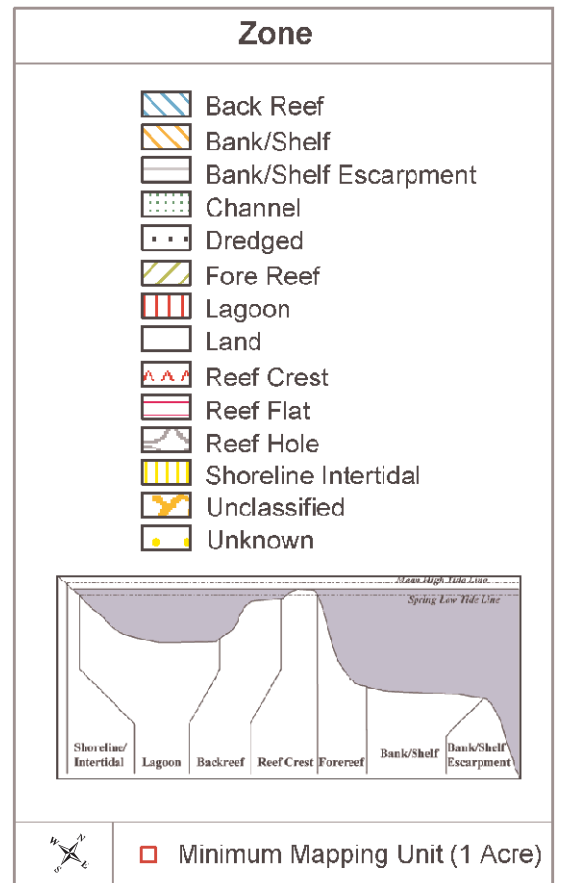
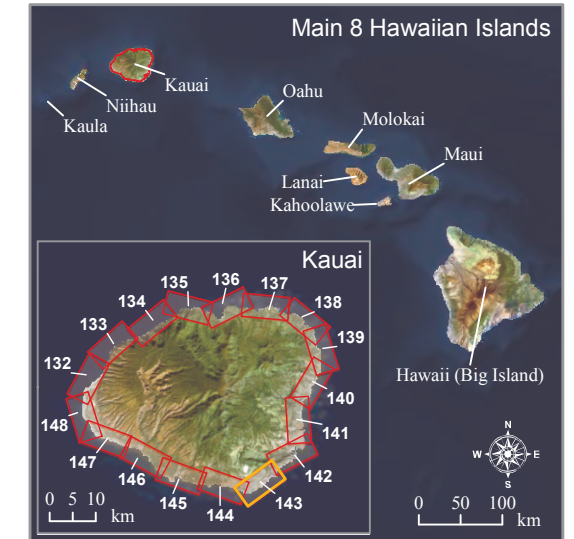
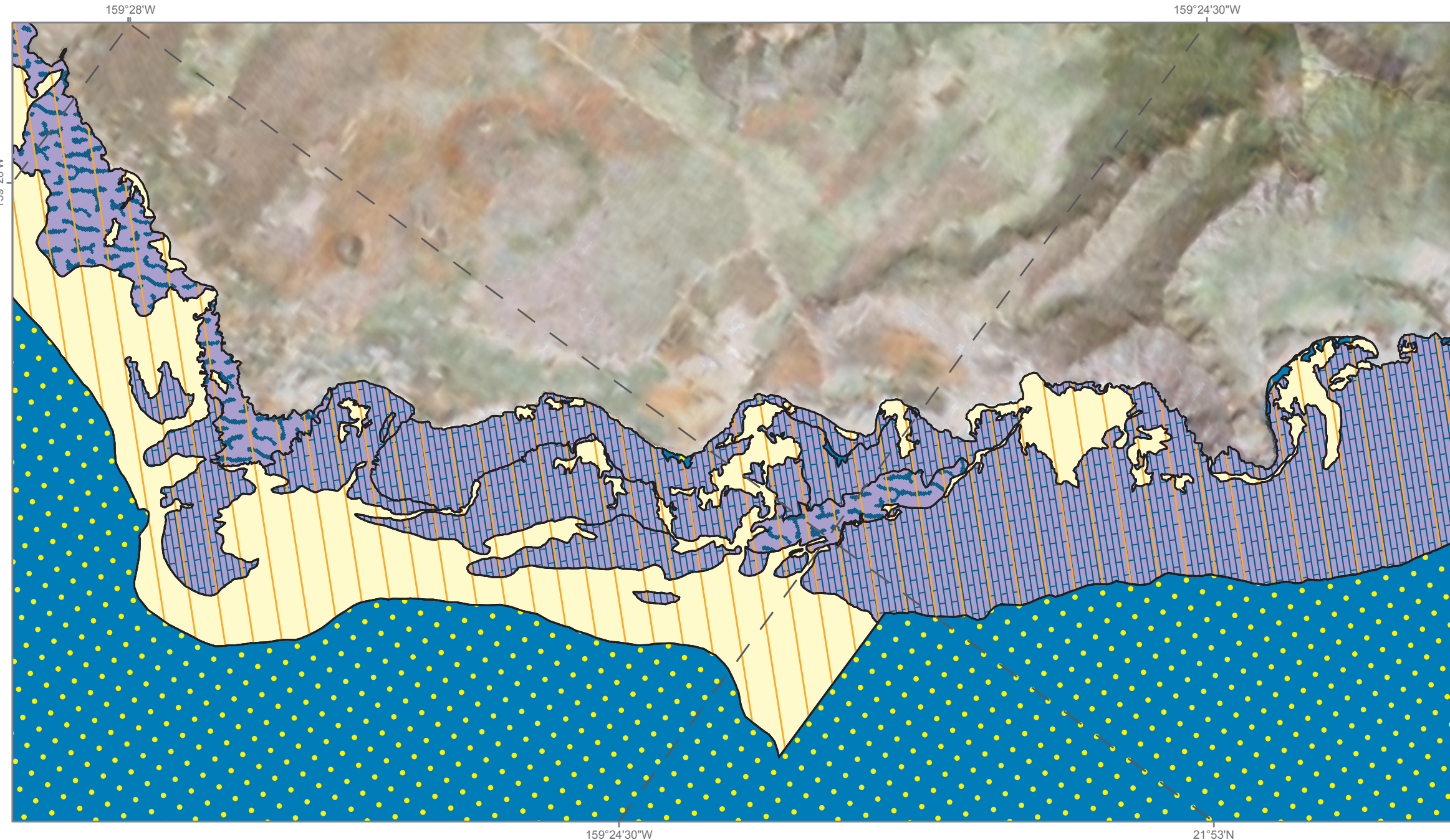


# Main 8 Hawaiian Islands (Kauai) : Shallow-water Benthic Habitats (Frame 143)



0 0.5 1 1.5 km



Map prepared by the National Ocean Service, Biogeography Branch,  
in cooperation with Analytical Laboratories of Hawaii. 2007  
For more information: [http://ccma.nos.noaa.gov/ecosystems/coralreef/main8hi\\_mapping.html](http://ccma.nos.noaa.gov/ecosystems/coralreef/main8hi_mapping.html)



1 0.5 0 mi