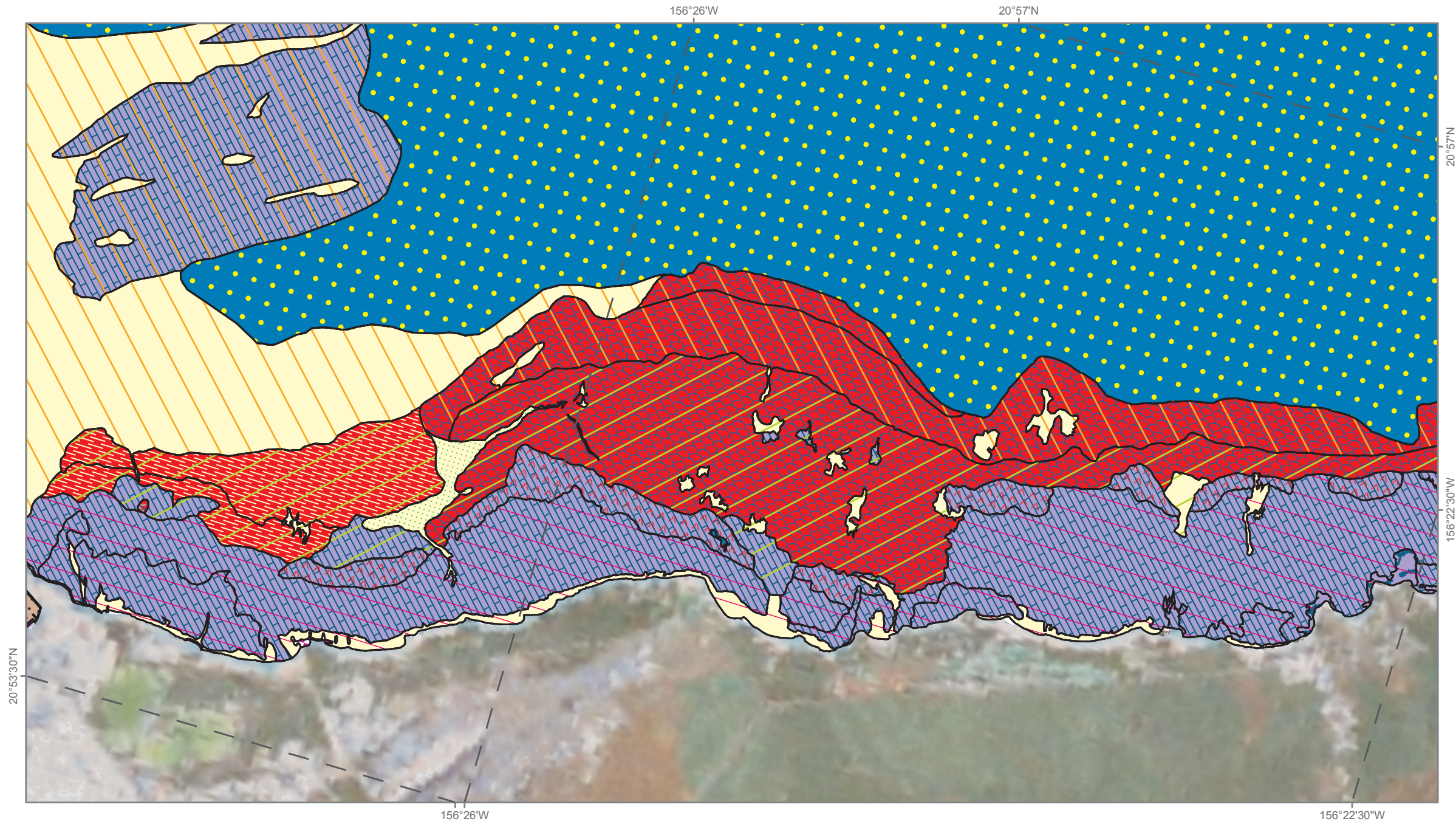


Main 8 Hawaiian Islands (Maui) : Shallow-water Benthic Habitats (Frame 54)

Frame 53



20°53'30"N

156°26'W

156°22'30"W

0 0.5 1 1.5 km



Map prepared by the National Ocean Service, Biogeography Branch,
in cooperation with Analytical Laboratories of Hawaii. 2007
For more information: http://ccma.nos.noaa.gov/ecosystems/coralreef/main8hi_mapping.html

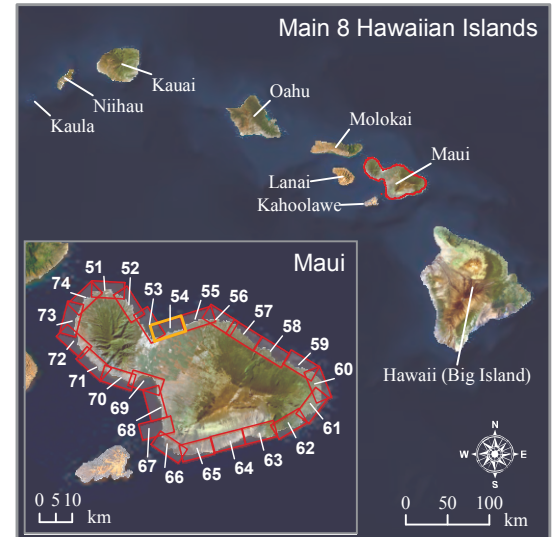


1 0.5 0 mi

Frame 55

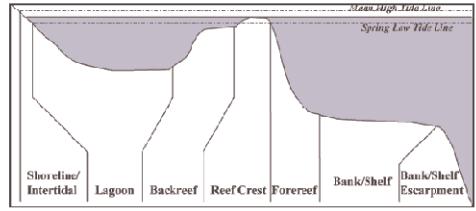
156°22'30"W

20°57'N



Zone

- Back Reef
- Bank/Shelf
- Bank/Shelf Escarpment
- Channel
- Dredged
- Fore Reef
- Lagoon
- Land
- Reef Crest
- Reef Flat
- Reef Hole
- Shoreline Intertidal
- Unclassified
- Unknown



Minimum Mapping Unit (1 Acre)