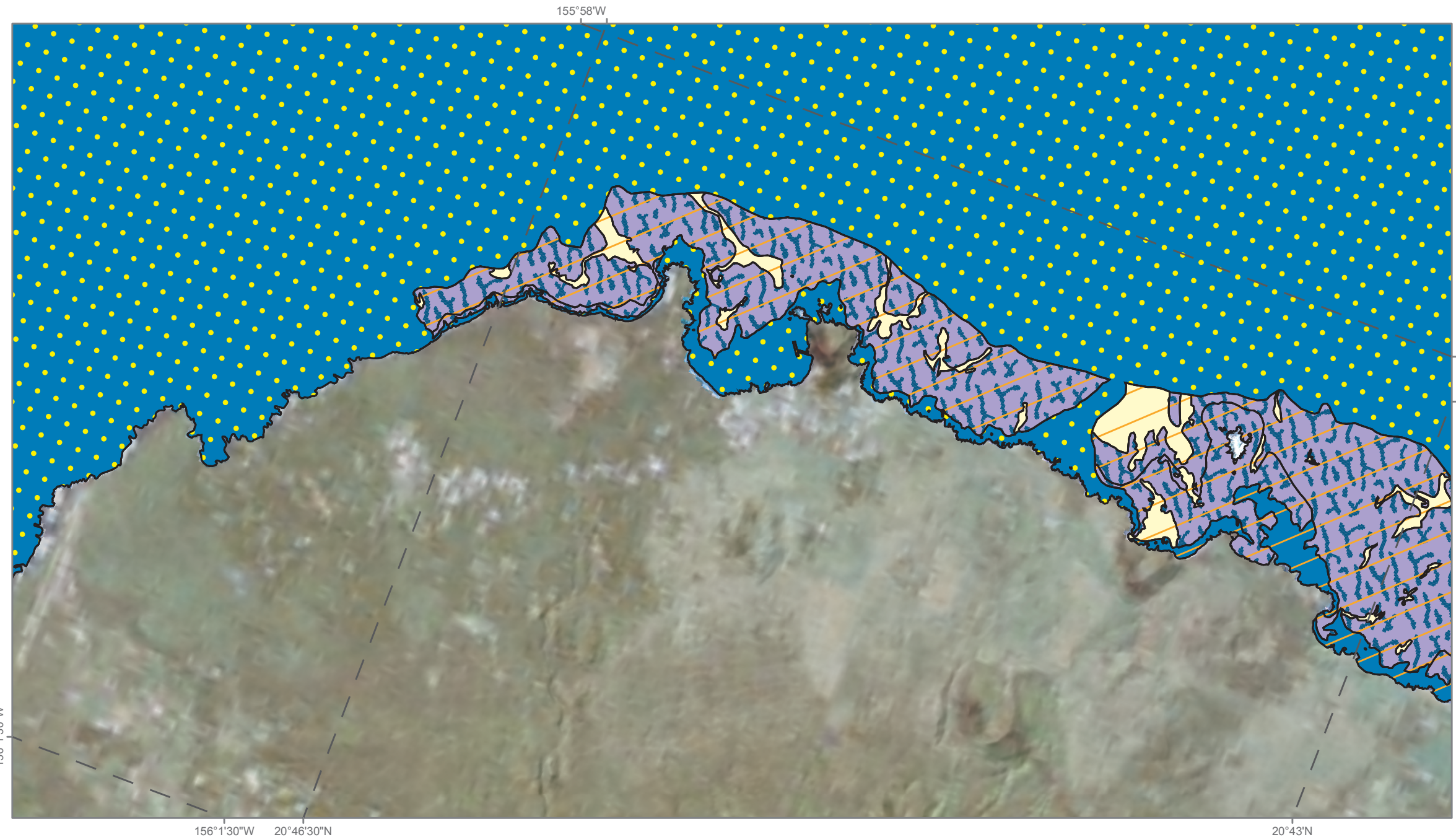


Main 8 Hawaiian Islands (Maui) : Shallow-water Benthic Habitats (Frame 60)

Frame 59

156°1'30"W



156°1'30"W 20°46'30"N



Map prepared by the National Ocean Service, Biogeography Branch,
in cooperation with Analytical Laboratories of Hawaii. 2007
For more information: http://ccma.nos.noaa.gov/ecosystems/coralreef/main8hi_mapping.html



Frame 61

N 3° 02'

