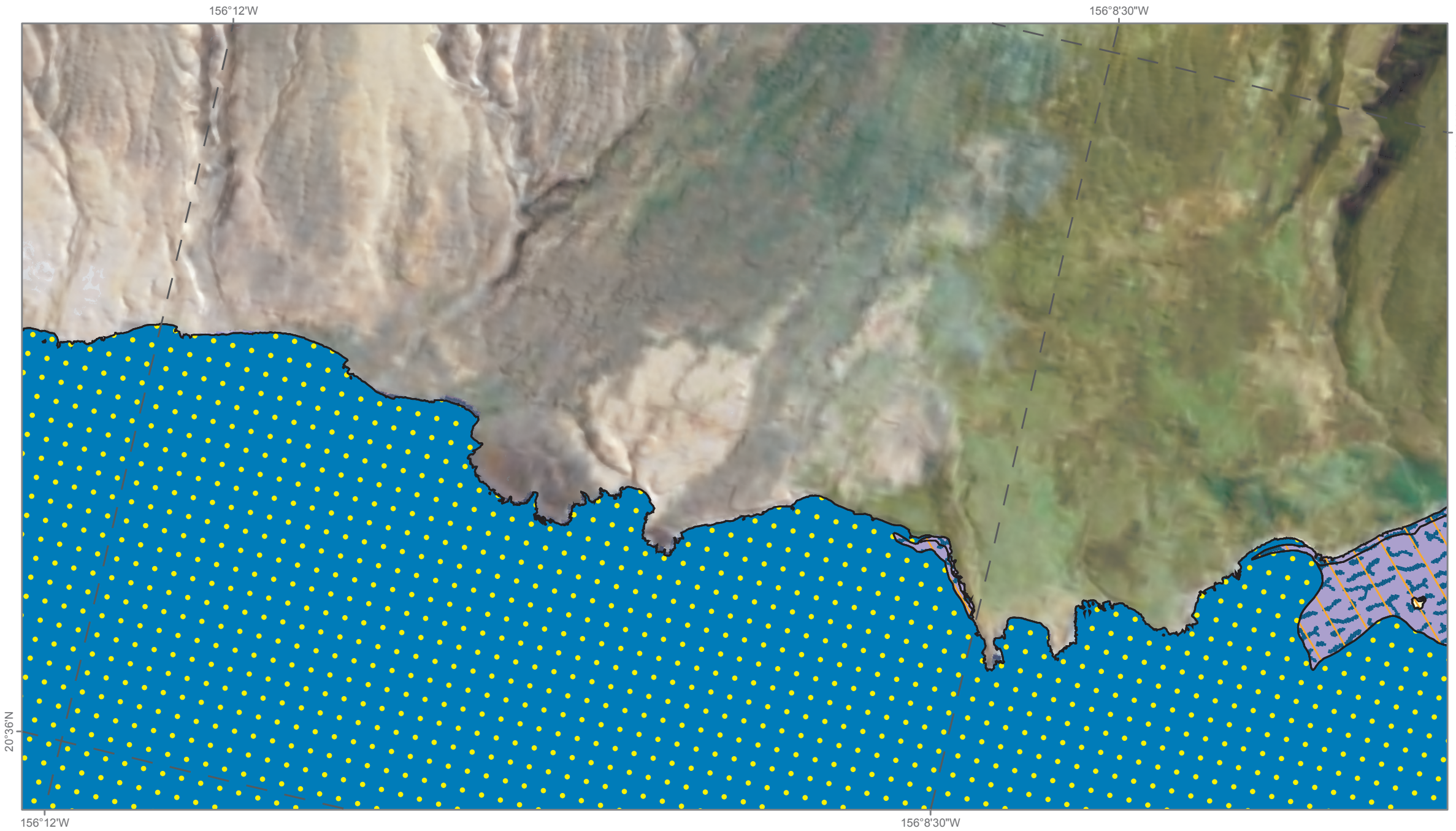


Main 8 Hawaiian Islands (Maui) : Shallow-water Benthic Habitats (Frame 63)

Frame 64



20°36'N

156°12'W

156°8'30'W



Map prepared by the National Ocean Service, Biogeography Branch,
in cooperation with Analytical Laboratories of Hawaii. 2007
For more information: http://ccma.nos.noaa.gov/ecosystems/coralreef/main8hi_mapping.html



Frame 62

