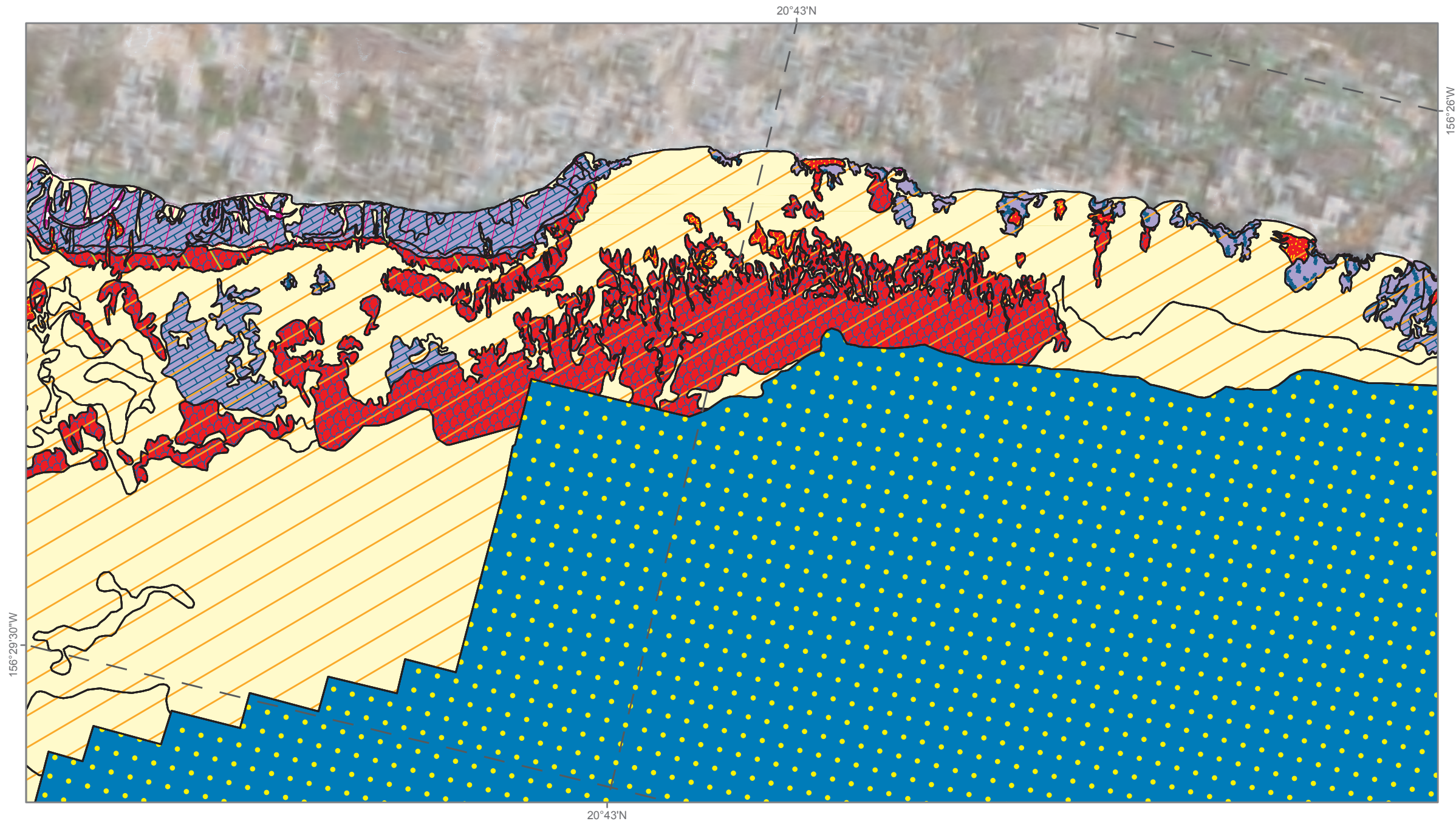


Main 8 Hawaiian Islands (Maui) : Shallow-water Benthic Habitats (Frame 68)

Frame 69



0 0.5 1 1.5 km



Map prepared by the National Ocean Service, Biogeography Branch, in cooperation with Analytical Laboratories of Hawaii. 2007
For more information: http://ccma.nos.noaa.gov/ecosystems/coralreef/main8hi_mapping.html



1 0.5 0 mi

Frame 67

