

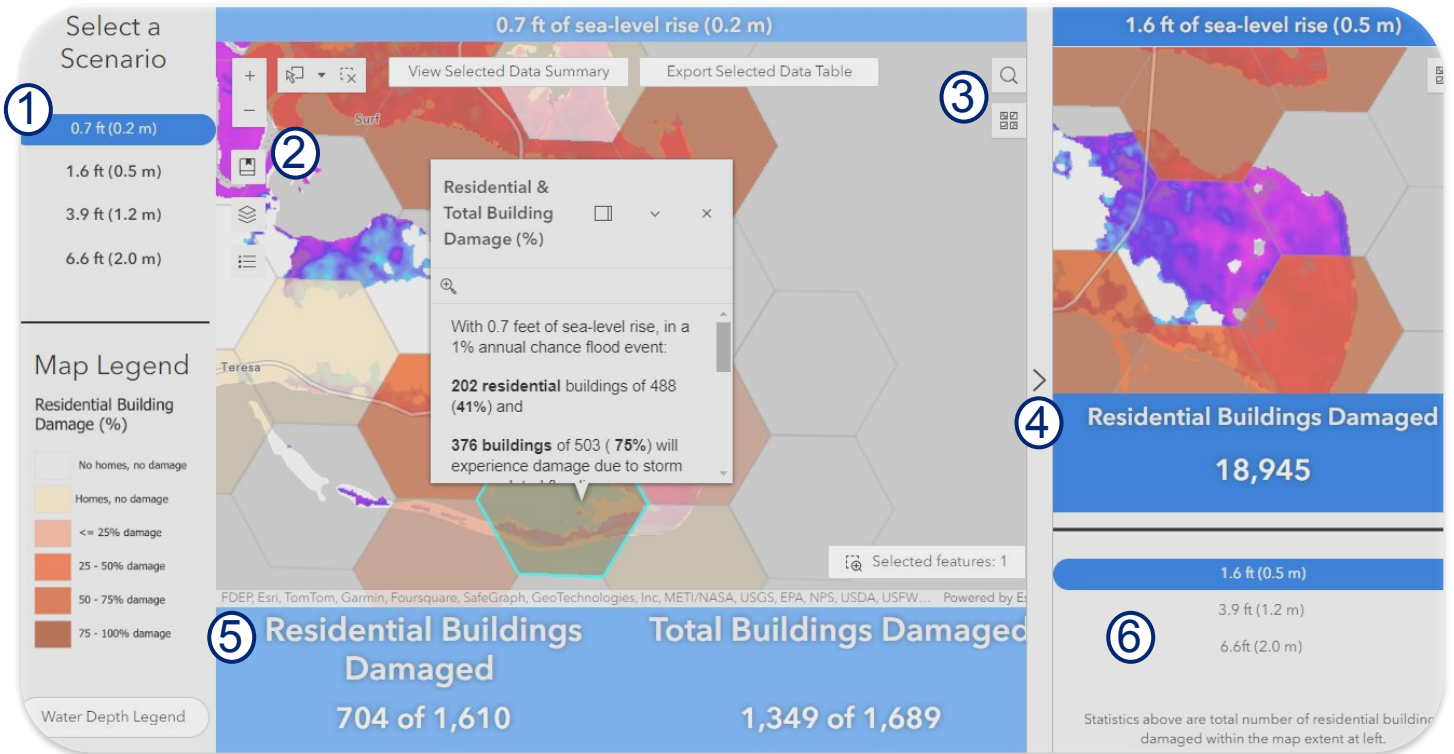
# Economic Impacts of Sea-level Rise User Guide

In the **Overview** section (top banner) - review the **methods, key findings and tips** for using the data viewer.

Look for the hexagons to learn more and explore infographics



**Explore the maps and data:** Choose a **category** in the top banner (buildings, people, etc...) and explore the map, data, and tools for the category



① Choose one of four SLR scenarios for the main map

② Map Tools (left)

- Zoom in / out
- See bookmarked cities
- Additional Data Layers
- Legend

③ Map Tools (right)

- City or zip code search
- Change the basemap

④ Slider bar to open and close the mini-map

⑤ Summarized data, based on the main map extent

⑥ Choose a SLR scenario for the mini-map

**Pro Tip!** Explore the additional data layers to deepen your understanding

## Dive deeper

Use the selection tools at the top of the map to learn more:

### View Feature Info

Click on a point or hexagon in the main map to view additional information as a pop-up.



### Select an Area

Select and Clear Selection tools

**Pro Tip!** Click the 'down' arrow by the Select tool to select in a different shape.

### Summarize or Export

View Selected Data Summary

Export Selected Data Table

**Pro Tip!** Export a .csv or other format of your selected data with the Export Table button.

# Economic Impacts of Sea-level Rise User Guide

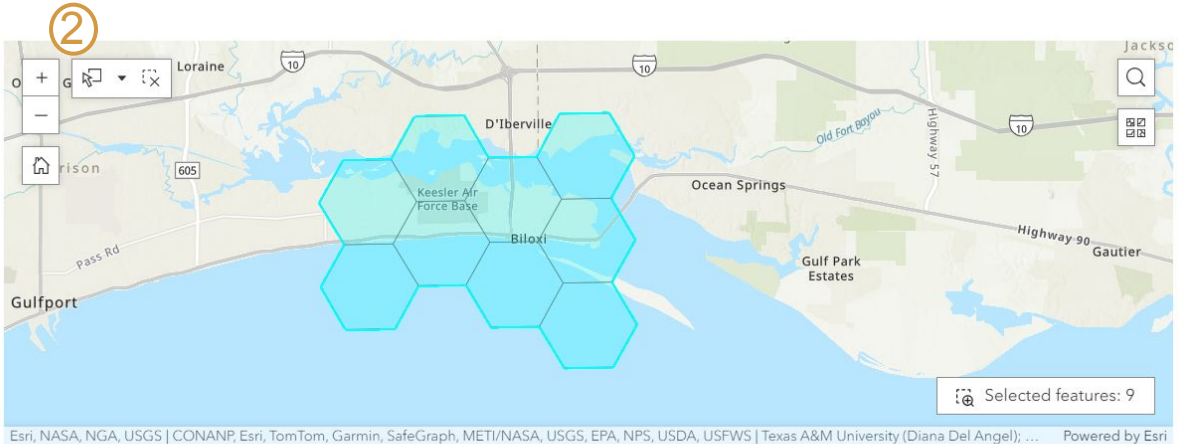
Generate a custom report for your area of interest in the 'Build a Report' section:

Overview Changing Floodplains Buildings People Roads Essential Facilities **Build Report**

1

## Report Builder

Generate a report for a custom area of interest: Use the map below to select an area of interest. Then view and print an infographic or table report for your selected area.



3

View Infographic Report

View Table Report

### 1 Step 1 - Go to the 'Build Report' section

### 2 Step 2 - Select your area of interest.

Zoom to your area of interest. At the top of the map, click the 'select' button. Draw a shape around your area of interest. To CLEAR your selection, choose the 'clear selection' tool to the right.

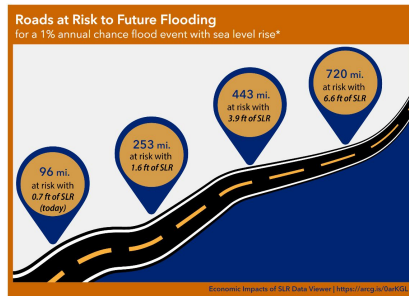
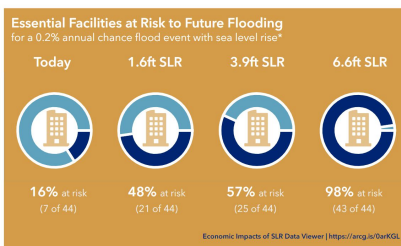


Select Clear

### 3 Step 3 - Choose the type of report you want.

Infographic report is a graphical summary of the data while the table report provides a series of numerical tables for your area of interest.

#### Infographic Report Examples



#### Table Report Example

Residential Buildings at Risk to Future Flooding for a 1% annual chance flood event with sea level rise				
	Today	1.6ft SLR	3.9ft SLR	6.6ft SLR
Residential Buildings Damaged	43	323	1,120	2,085
Total Residential Buildings	15,755	15,755	15,755	15,755
Percent Residential Buildings Damaged	0 %	2 %	7 %	13 %

People at Risk to Future Flooding for a 1% annual chance flood event with sea level rise				
	Today	1.6ft SLR	3.9ft SLR	6.6ft SLR
Displaced People	1,123	3,928	6,813	9,085
Percent People Displaced	3 %	10 %	18 %	24 %
People Needing Shelter	61	261	528	681
Percent People Needing Shelter	0 %	1 %	1 %	2 %
Total People	38,321	38,321	38,321	38,321

### 4 Step 4 - Save your report and cite the data.

At the bottom of each report page there's more:

- **Printing tips** button has tips to help you print or save the report to pdf.
- **Citations** for the data and for the infographic usage.
- **Build another report** options

Return to Build Report page

View Table Report

