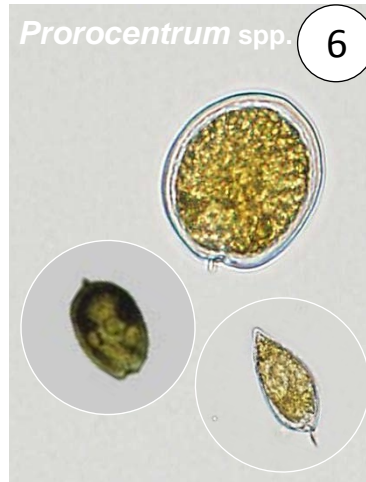
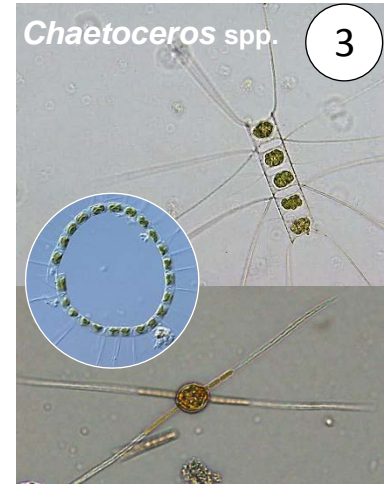
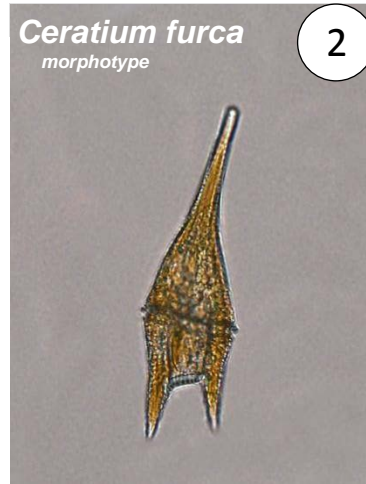
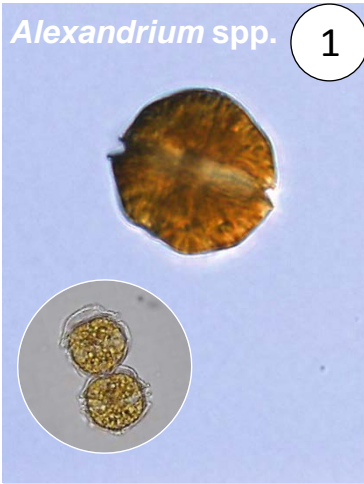


PACIFIC  
REGION 1  
ID SHEET

TARGET  
HAB  
SPECIES

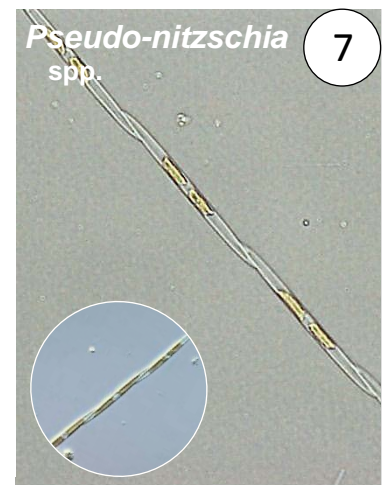
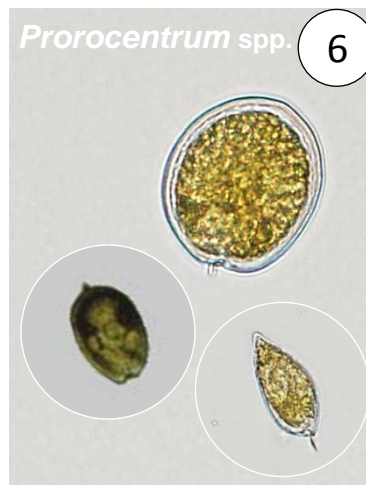
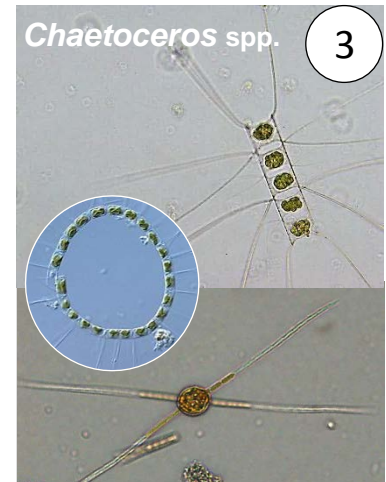
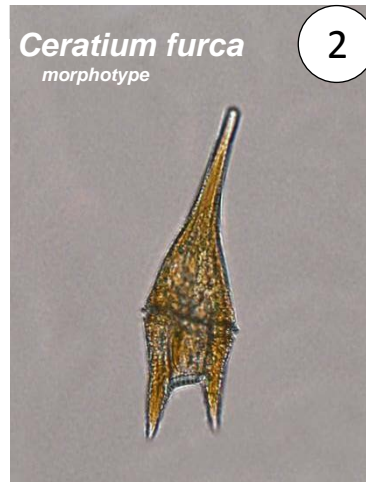
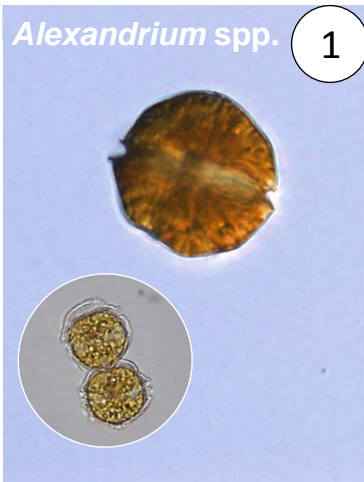
Images NOT to scale  
Images: NOAA PMN



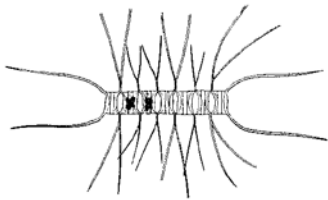
PACIFIC  
REGION 1  
ID SHEET

TARGET  
HAB  
SPECIES

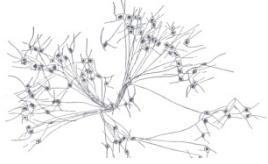
Images NOT to scale  
Images: NOAA PMN



*Chaetoceros* spp. 3  
morphotype



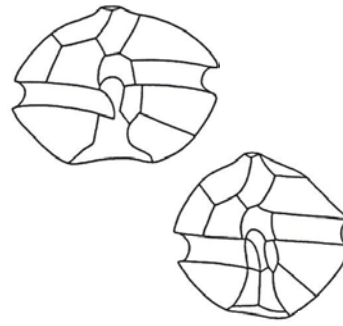
Cupp, E.E., 1943.



*Ceratium furca* 2  
morphotype



*Alexandrium* spp. 1  
Saxitoxin



**PACIFIC REGION 1  
TARGET HAB SPECIES**

This sheet is designed to aid NOAA  
Phytoplankton Monitoring Network  
(PMN) citizen monitors on basic  
phytoplankton identification.

Only the taxa targeted by the  
PMN are listed. Not all phytoplankton  
collected can be identified  
with this sheet.

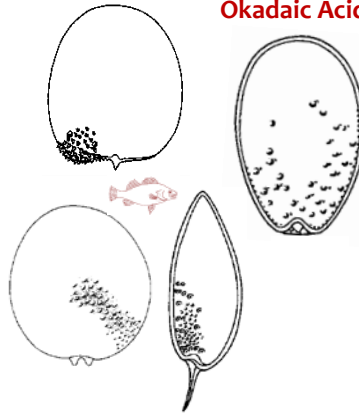
Illustrations NOT to scale  
Illustrations: Tomas, C. (Ed.), 1997.

*Pseudo-nitzschia* spp. 7  
Domoic Acid

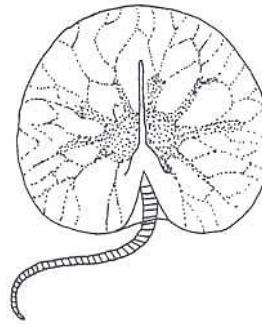


Cupp, E.E., 1943.

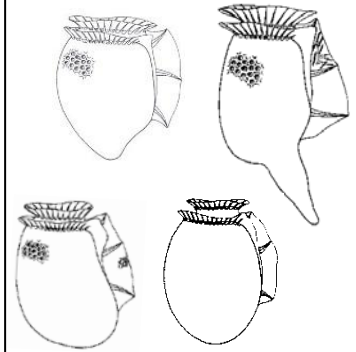
*Prorocentrum* spp. 6  
Okadaic Acid



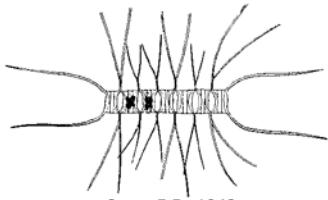
*Noctiluca scintillans* 5



*Dinophysis* spp. 4  
Okadaic Acid



*Chaetoceros* spp. 3  
morphotype



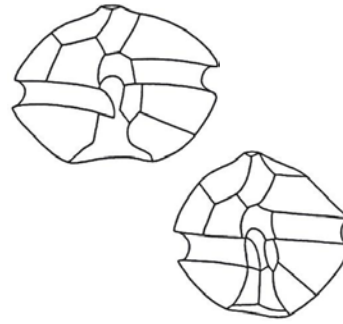
Cupp, E.E., 1943.



*Ceratium furca* 2  
morphotype



*Alexandrium* spp. 1  
Saxitoxin



**PACIFIC REGION 1  
TARGET HAB SPECIES**

This sheet is designed to aid NOAA  
Phytoplankton Monitoring Network  
(PMN) citizen monitors on basic  
phytoplankton identification.

Only the taxa targeted by the  
PMN are listed. Not all phytoplankton  
collected can be identified  
with this sheet.

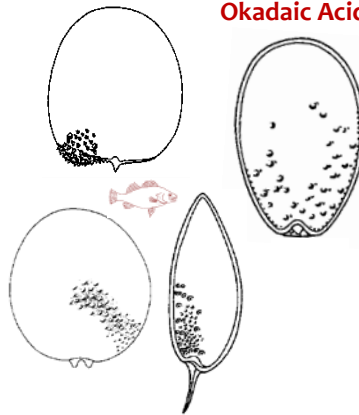
Illustrations NOT to scale  
Illustrations: Tomas, C. (Ed.), 1997.

*Pseudo-nitzschia* spp. 7  
Domoic Acid

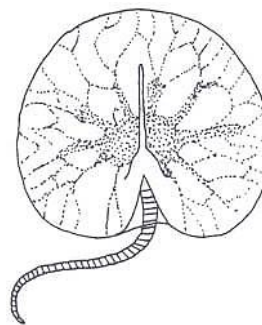


Cupp, E.E., 1943.

*Prorocentrum* spp. 6  
Okadaic Acid



*Noctiluca scintillans* 5



*Dinophysis* spp. 4  
Okadaic Acid

