

Economic Analysis of Shoreline Treatment Options in Coastal New Hampshire: Adapting to Coastal Hazards

Frequently Asked Questions

Description: Researchers with NOAA's National Centers for Coastal Ocean Science (NCCOS) are conducting this study to better understand public perceptions of coastal risks and hazards, current and anticipated adaptation practices on private property, and preferences for adaptation practices on public property in coastal New Hampshire. To achieve this goal, NCCOS will conduct a household survey of residents in coastal New Hampshire, Maine, and Massachusetts.

Who is conducting this study?

The National Oceanic and Atmospheric Administration (NOAA) conducts science on the nation's oceans, coasts, and atmosphere, and provides citizens and decision-makers with information on how to manage their natural resources. NCCOS is conducting this study, which is a part of NOAA's National Ocean Service. The University of New Hampshire Survey Center is assisting NOAA with the data collection portion of this study.

Why is NOAA conducting this study?

The mission of NCCOS is to conduct science to inform coastal management. NCCOS has significant experience conducting research throughout the U.S. and its territories, including the development of quantitative assessments to evaluate people's perceptions, beliefs, behaviors, and values from a spatial perspective.

Who is funding this study and why?

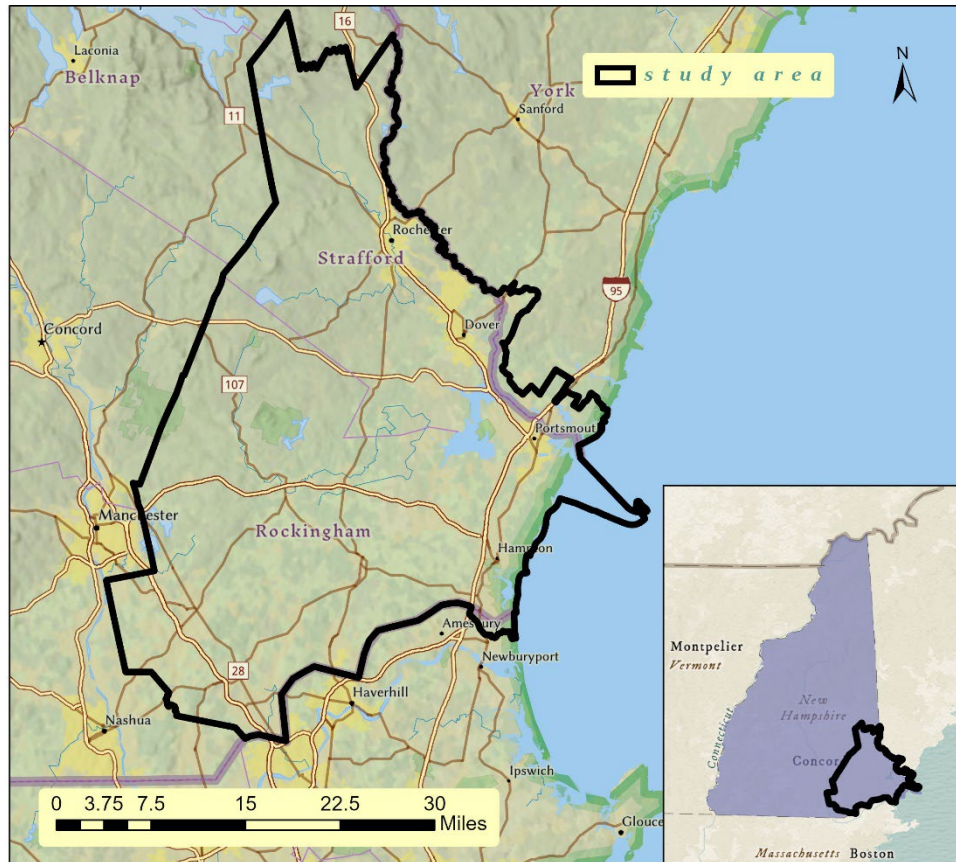
This study is being funded internally by NCCOS as part of its discretionary process. For more information on NCCOS strategic science priorities, please see: <https://cdn.coastalscience.noaa.gov/page-attachments/about/nccos-advancing-coastal-science.pdf>

How will you collect the data?

A randomly selected sample of households within the study area will be mailed an invitation to participate in the survey, which can be completed either online or on paper.

Who will be asked to take the survey?

The study region (depicted in the map below) consists of Strafford and Rockingham Counties in New Hampshire, as well as households within Maine and Massachusetts that are close to the Piscataqua River and Hampton-Seabrook Estuary, respectively. Residents who live the study region will be randomly invited to participate in the study.



Is participation in the survey mandatory?

No, participation in the survey is voluntary.

What types of questions will you ask?

The survey will consist of questions asking about your experiences and opinions related to coastal hazards and options for managing shorelines in New Hampshire. Demographic characteristics of participants will also be collected to ensure that all groups are fairly represented.

Are responses confidential?

Yes, responses to the survey will remain confidential. For analysis and reporting purposes, all answers provided will be aggregated with the responses of others who participate in the study.

Can I take the survey?

Due to our random sampling design, only those who are selected through the sampling process will be invited to take the survey. If you receive an invitation to participate in the survey, we encourage you to complete it.

How long will the survey take?

We estimate that the survey will take approximately 15 to 20 minutes to complete.

When will data collection take place?

The survey will take place over a three to four month period in mid-2021.

What is the timeline for this project?

The project will last three to four fiscal years. The project began in April 2018.

How much does this project cost?

This project was funded by NCCOS. If you would like more information on NCCOS's budget and priorities, please see: <https://www.noaa.gov/organization/budget-finance-performance/budget-and-reports>.

What products will be derived from this project?

There will be several products from this effort, including a final report, infographics, data tables, and maps.

Where can I find the results of this project?

Once finalized, the results of this project will be posted here:

<https://coastalscience.noaa.gov/project/economic-analysis-of-shoreline-treatment-options-in-coastal-new-hampshire/>

How will findings from this study help my community?

This study will support the development of a Coastal Shoreline Management Plan (CSMP) for New Hampshire, as well as help inform local coastal zone management and planning. It will help ensure the CSMP and future management and planning practices properly address these public perceptions, take private property adaptation practices into account, and incorporate the public's preferences. Finally, this information will also help local managers develop more targeted and meaningful messaging in their communication and outreach efforts.

Who can I contact with questions about this study?

You may contact the project principal investigator:

Dr. Sarah Gonyo
National Centers for Coastal Ocean Science
NOAA National Ocean Service
Building SSMC4, Rm 9320
1305 East-West Highway
Silver Spring, MD 20910
Email: sarah.gonyo@noaa.gov