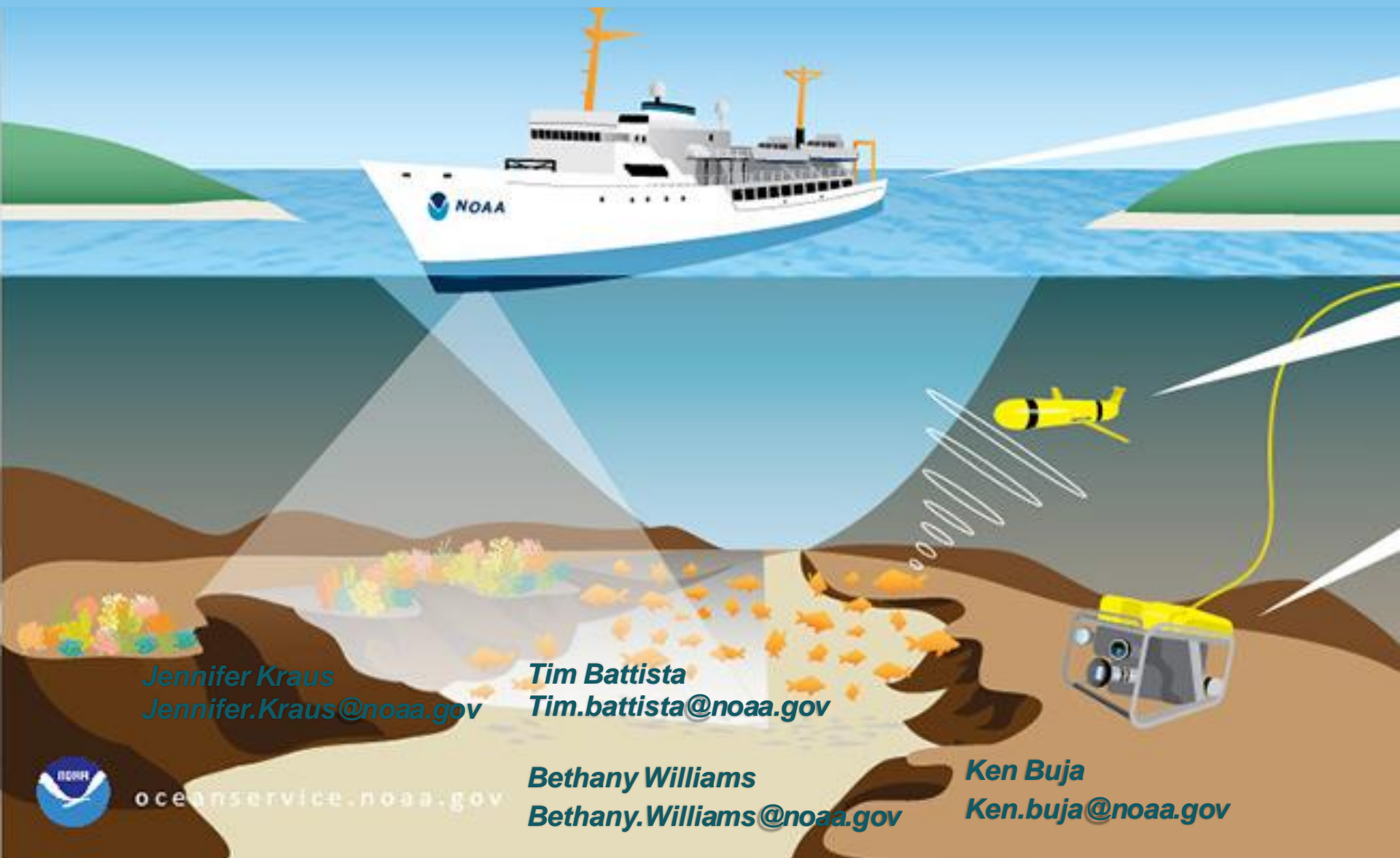


US Caribbean Prioritization: Results



Jennifer Kraus
Jennifer.Kraus@noaa.gov

Tim Battista
Tim.battista@noaa.gov

Bethany Williams
Bethany.Williams@noaa.gov

Ken Buja
Ken.buja@noaa.gov



oceanservice.noaa.gov

Agenda

- 1) Project Overview
- 2) Input and Analytical Methods
- 3) Results
- 4) Application of Results
- 5) Feedback Web Tool Demo

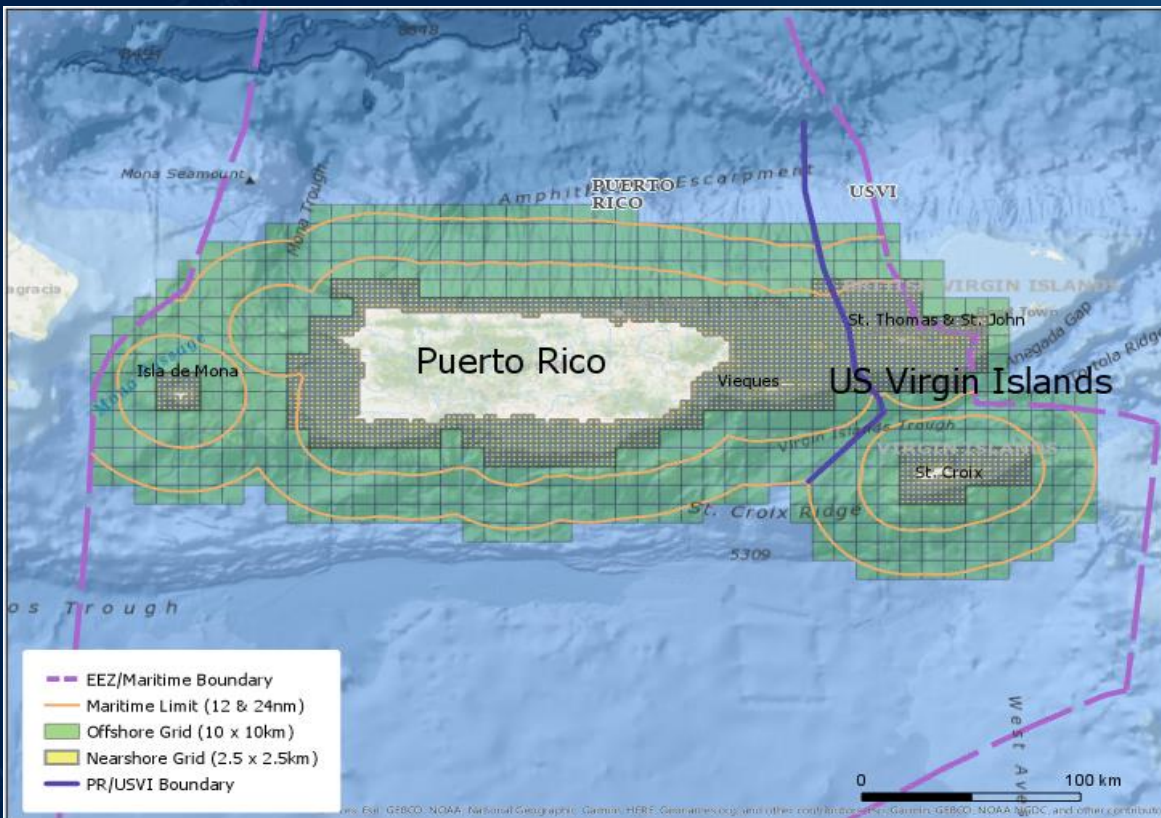


Project Overview

- Supported by NOAA's Coral Reef Conservation Program
- Objective to identify priority needs for seafloor mapping and visual surveys in the US Caribbean
- Supports strategic planning for local organizations and encourages collaboration

Four Regions

- Inshore/Offshore PR & USVI
- Nearshore Boundary: 100 m isobath
- Offshore Boundary: 24 nm Maritime Limit
- Each respondent had access to all 4 regions



Participants given 4 weeks to input their 'coins' into cells using the web tool - **Total of 15 organizations provided input**



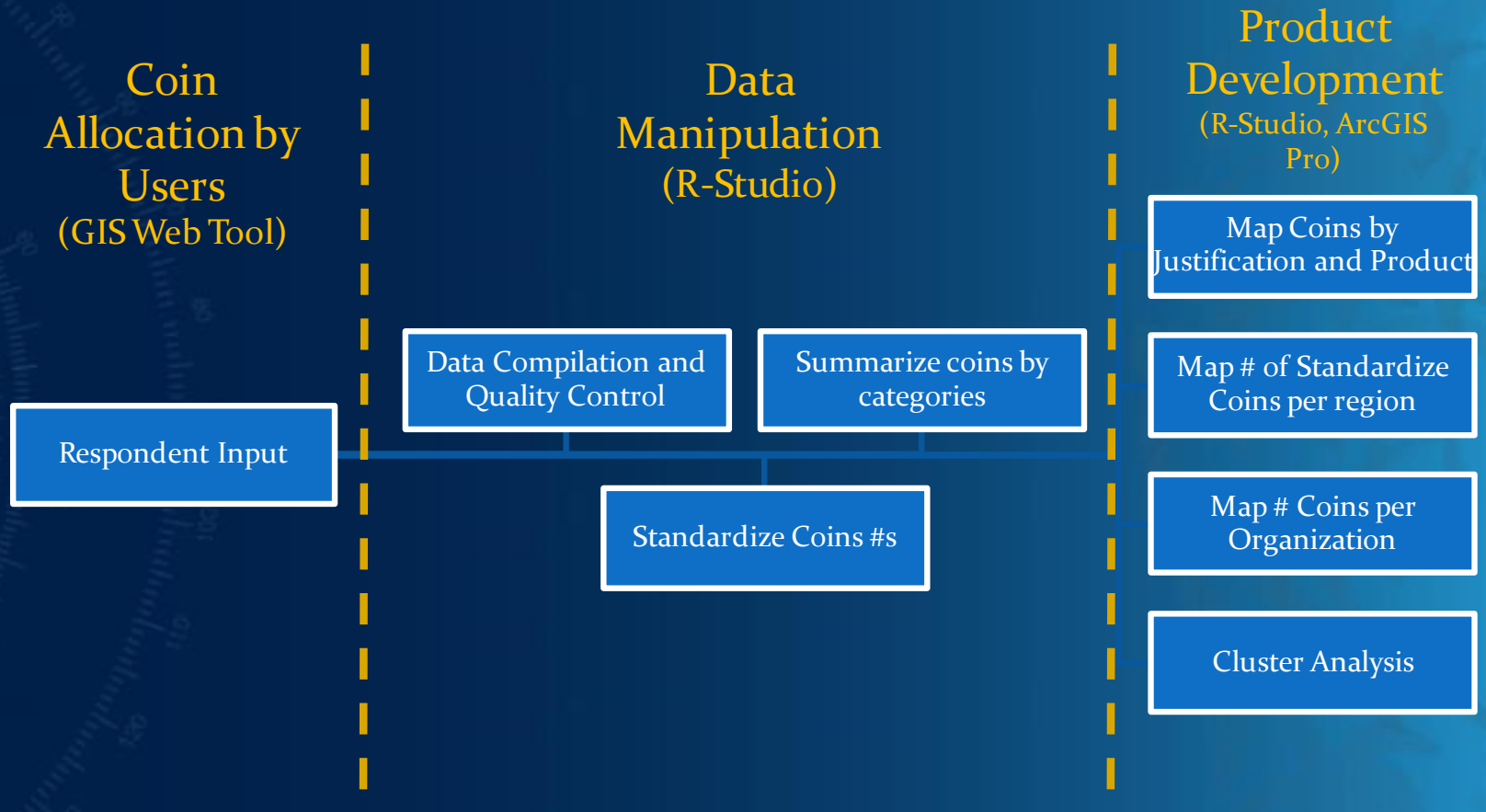
Input Methods – Who?

Total of 15 organizations provided input

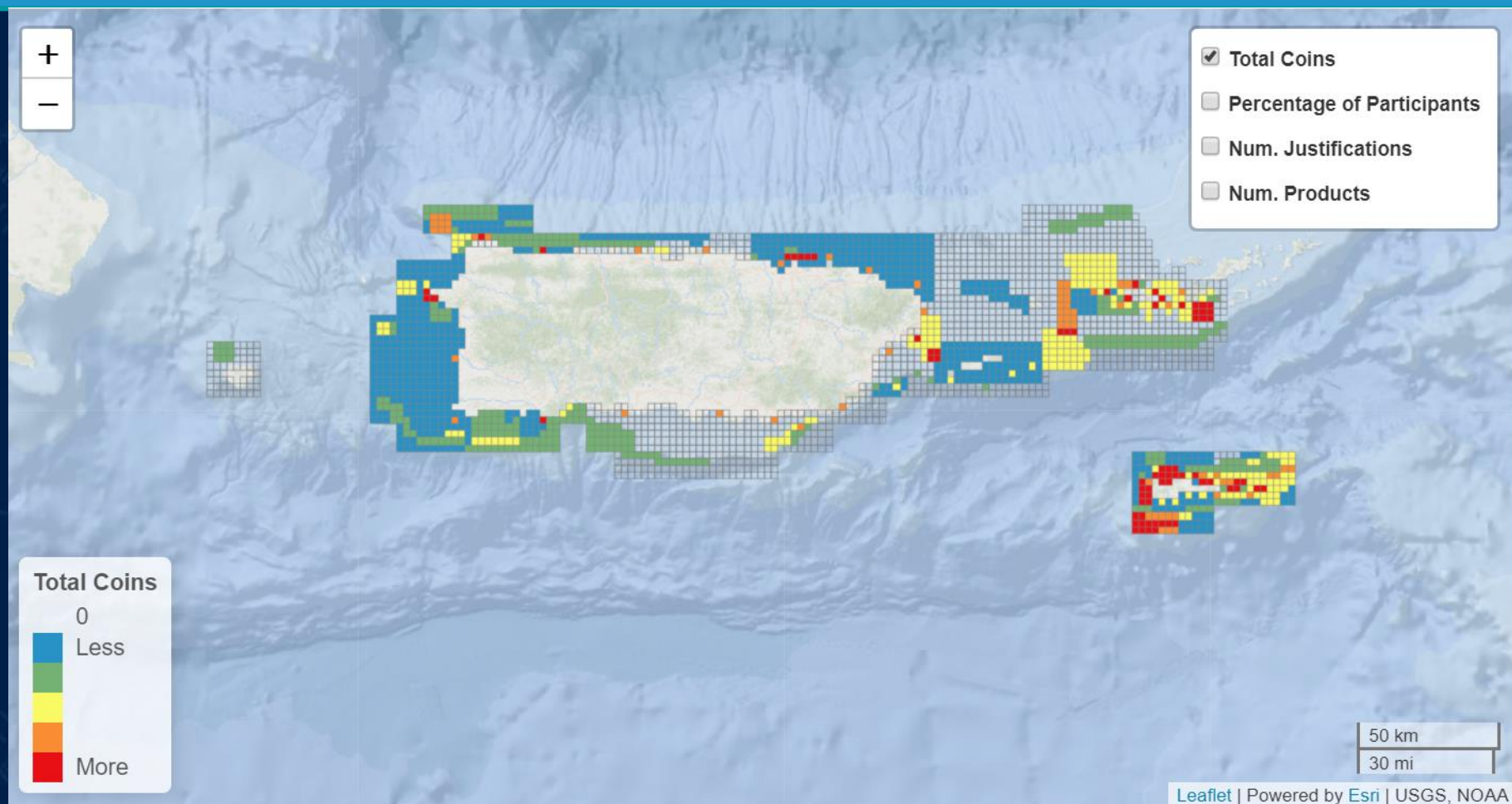
1. Caribbean Integrated Ocean Observing System (CARICOOS)
2. NOAA Caribbean Fishery Management Council (CFMC)
3. NOAA NMFS Southeast Regional Office (SERO)
4. Department of Natural Resources –PR (DNER)
5. Department of Natural Resources - USVI (DPNR)
6. NOAA National Geodetic Survey (NGS)
7. NOAA Office of Exploration and Research (OER)
8. NOAA Office of Protected Resources (OPR)
9. NOAA Office of Science and Technology (OST)
10. NOAA Southeast Fisheries Science Center (SEFSC)
11. The Nature Conservancy (TNC)
12. University of Puerto Rico (UPR)
13. US Fish and Wildlife (USFW)
14. US Geologic Survey (USGS)
15. University of Virgin Islands (UVI)



Analytical Methods



Results: # Coins Inshore PR & USVI



Which areas had the highest # coins?

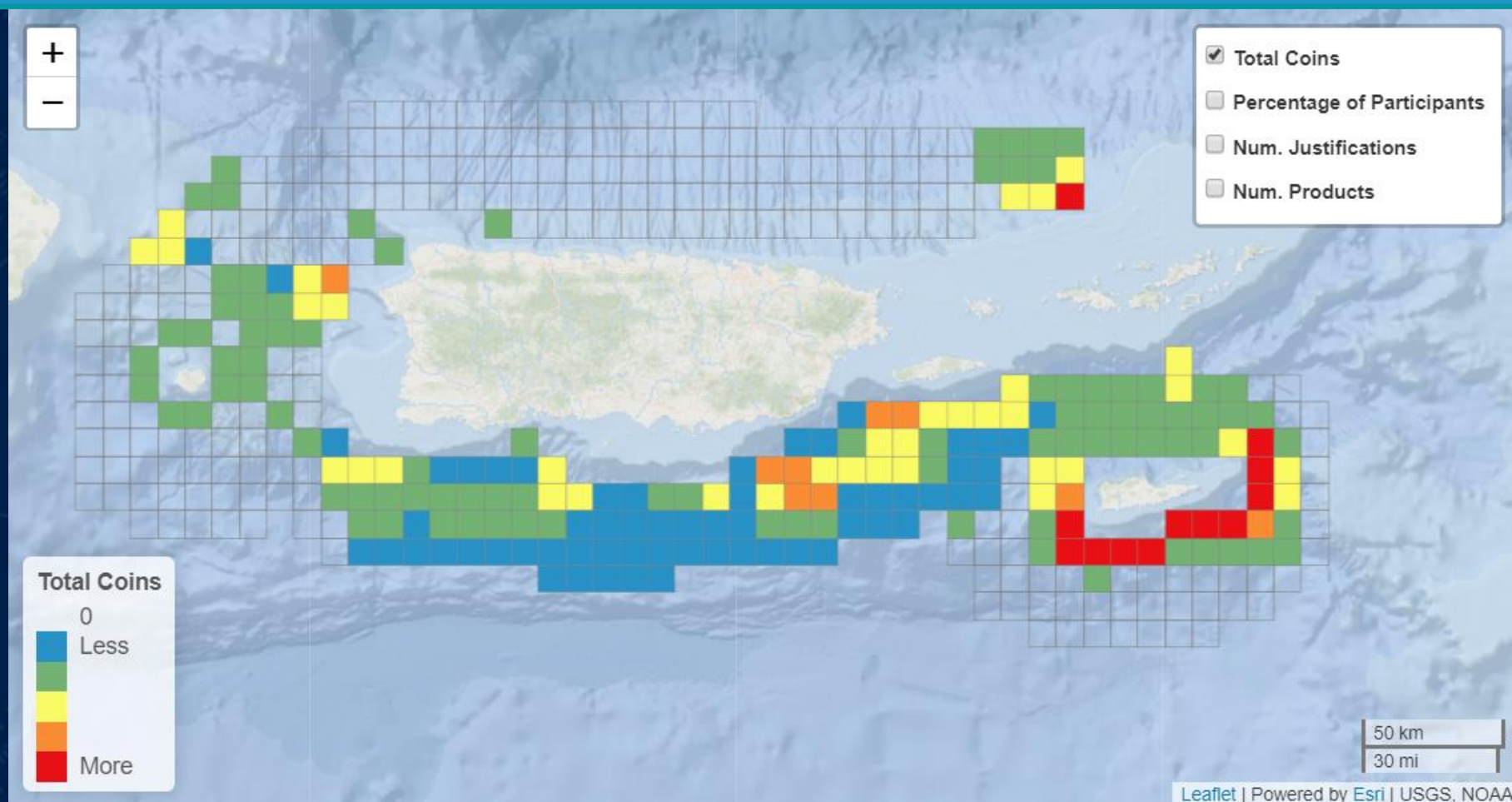
(PR) Centro Puntas (west), San Juan, Vieques Channel?

(USV) Various spots around St. Thomas, Southeast St. John (Concordia), & St. Croix (MSSAA)

Red = Top 5% of cells (with most coins)



Results: # Coins Offshore PR & USVI



Which areas had the highest # coins?

(PR) Southwest PR, offshore Centro Puntas

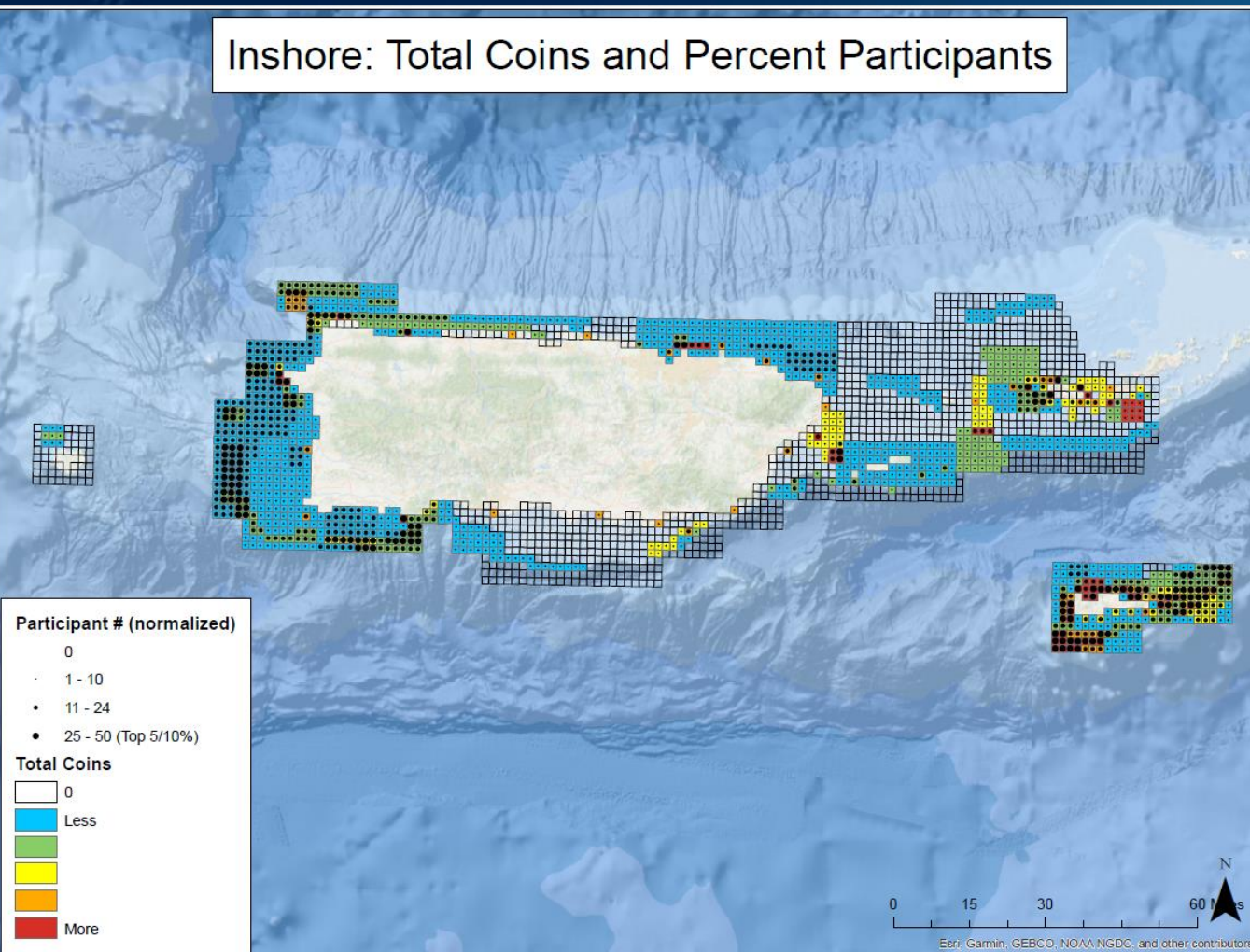
(USVI) South, southeast, eastern St. Croix, north of St. Thomas

Red = Top 5% of cells (with most coins)



Results: Inshore # Coins and % Participant

Inshore: Total Coins and Percent Participants

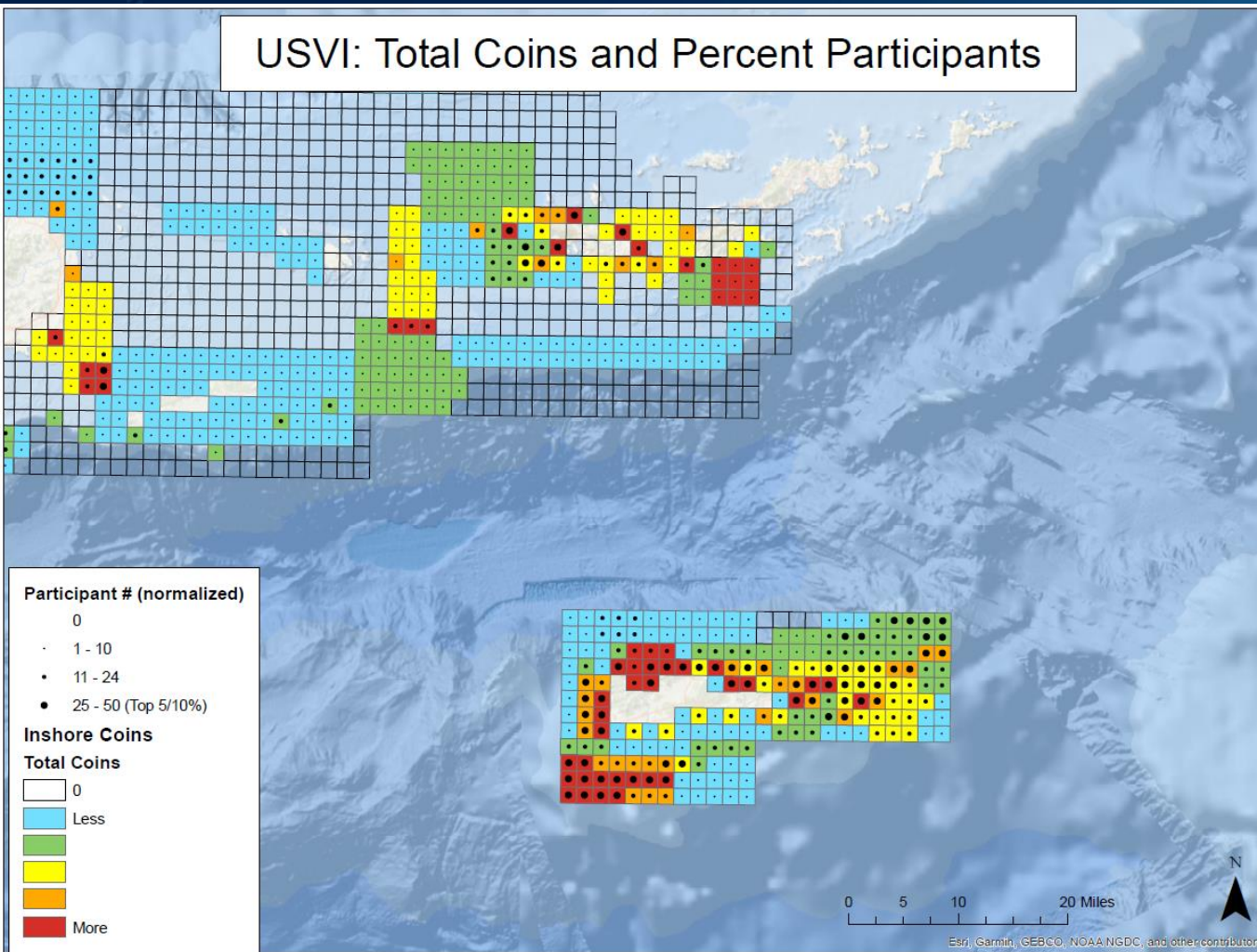


Where and Who:

- concentration of participants who allocated coins into that cell
- Not always same as highest # coins
- Some areas have more people interested, but don't have high number of coins allocated
- Tells us where we can satisfy the needs of several organizations



Results: St. Croix # Coins and % Participant



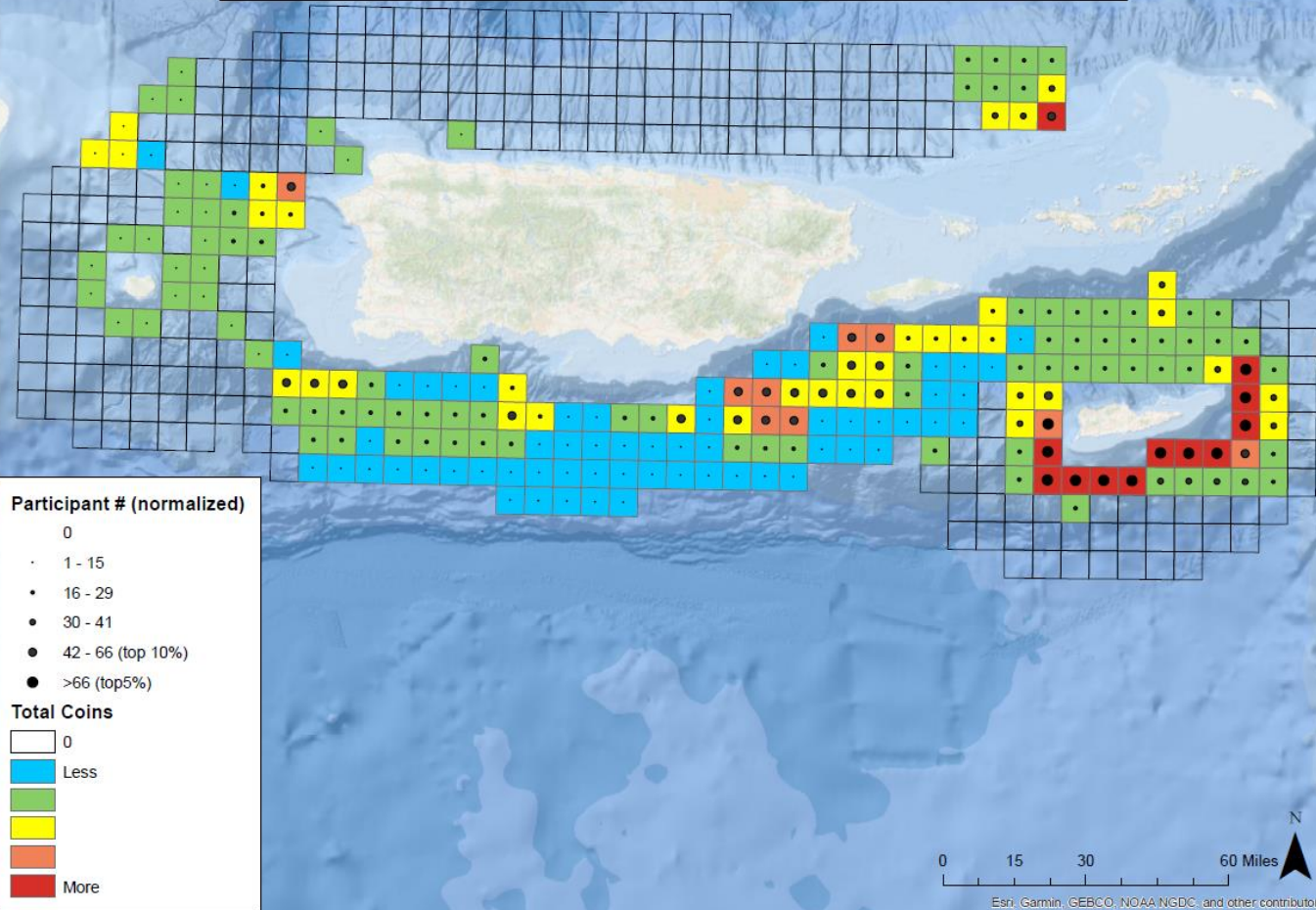
Where and Who:

- concentration of participants who allocated coins into that cell
- Not always same as highest # coins
- Some areas have more people interested, but don't have high number of coins allocated
- Tells us where we can satisfy the needs of several organizations



Results: Offshore # Coins and % Participant

Offshore: Total Coins and Percent Participants



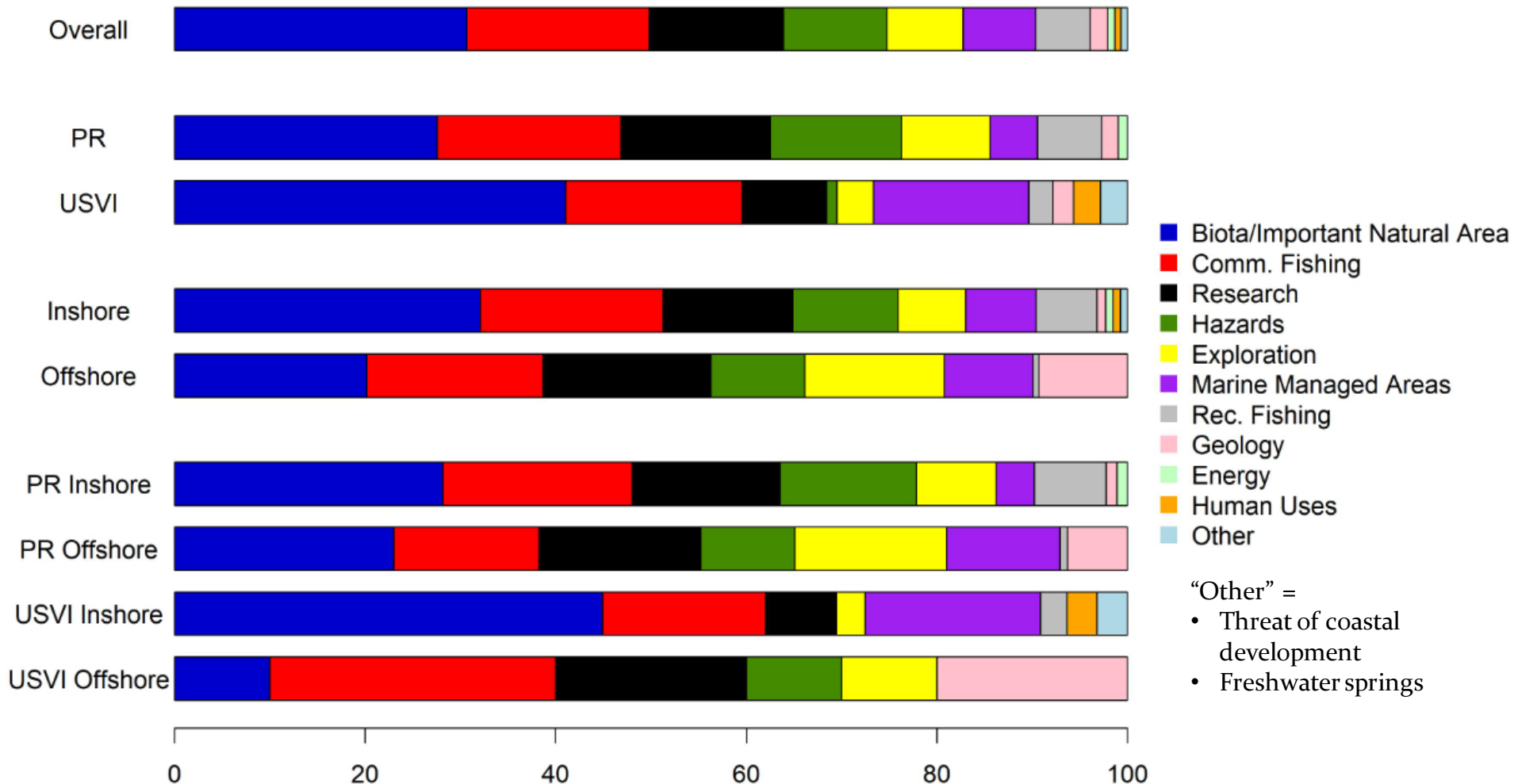
Where and Who:

- concentration of participants who allocated coins into that cell
- Higher correlation between # coins and % participants
- Tells us where we can satisfy the needs of several organizations



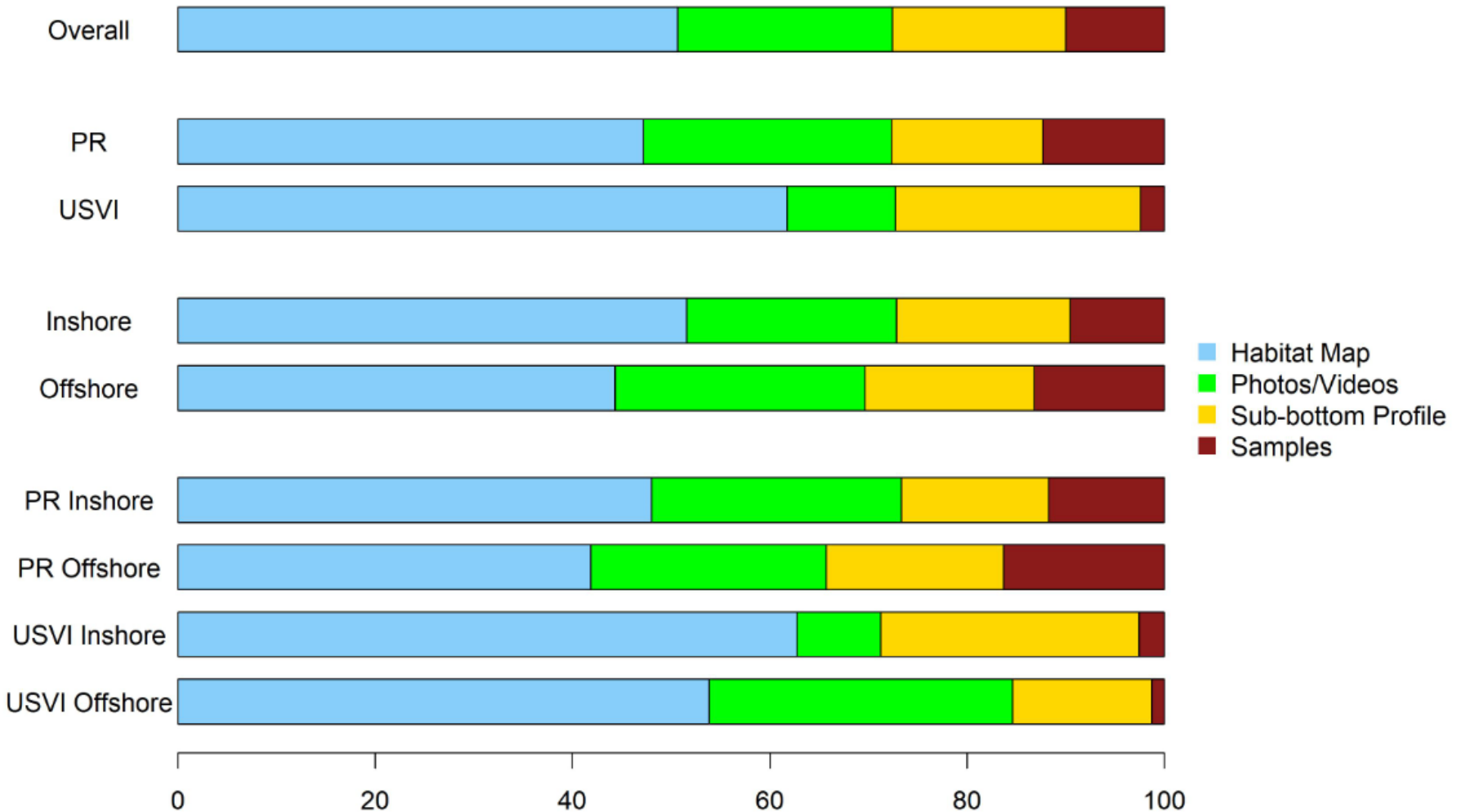
Results: Justifications

Which Justifications were chosen most frequently?



Results: Products

Which Products were chosen most frequently?

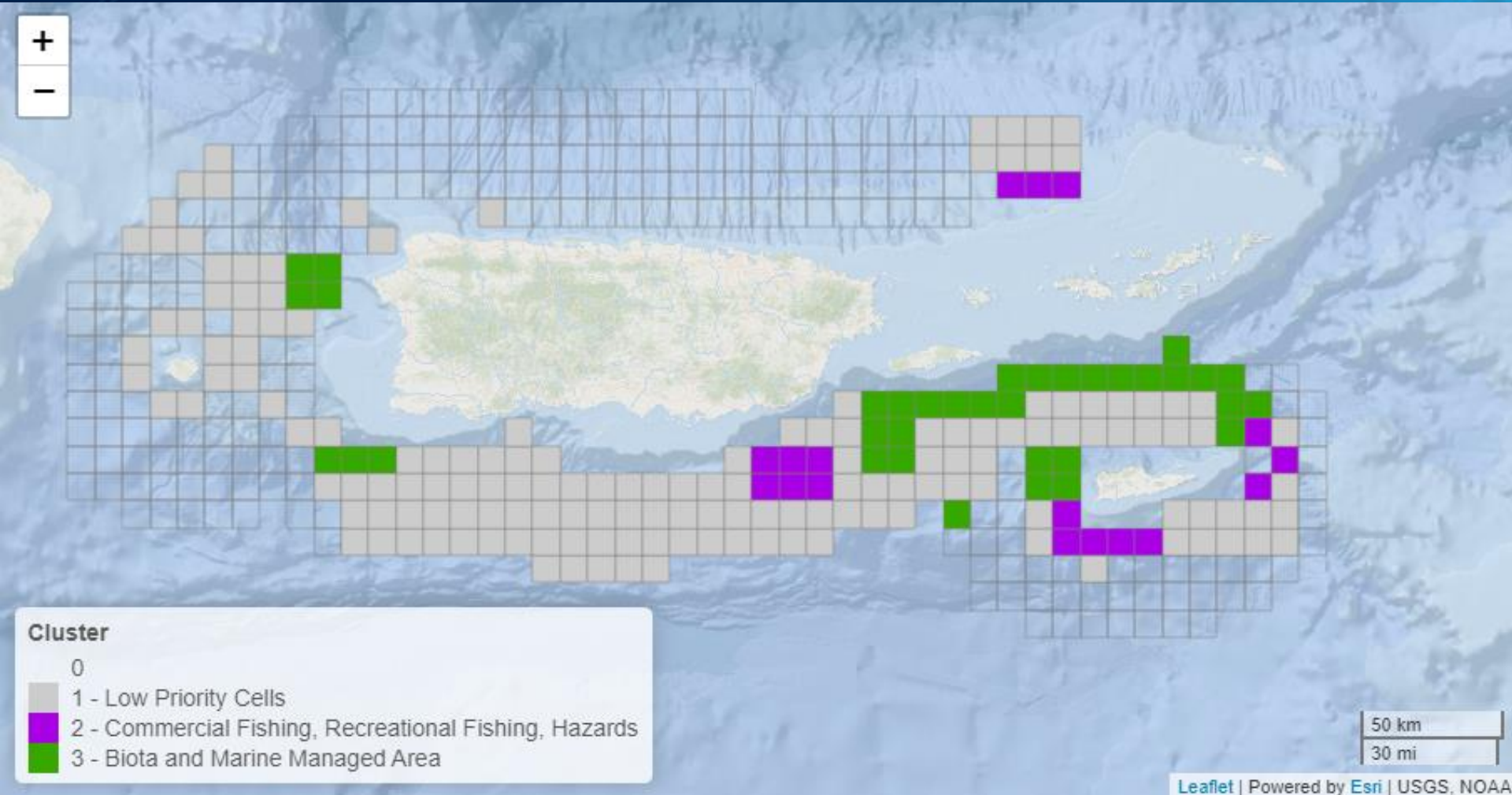


Results: Cluster Analysis Inshore

Combining Where?, Why?, When? and What? using Cluster Analysis



Results: Cluster Analysis Offshore



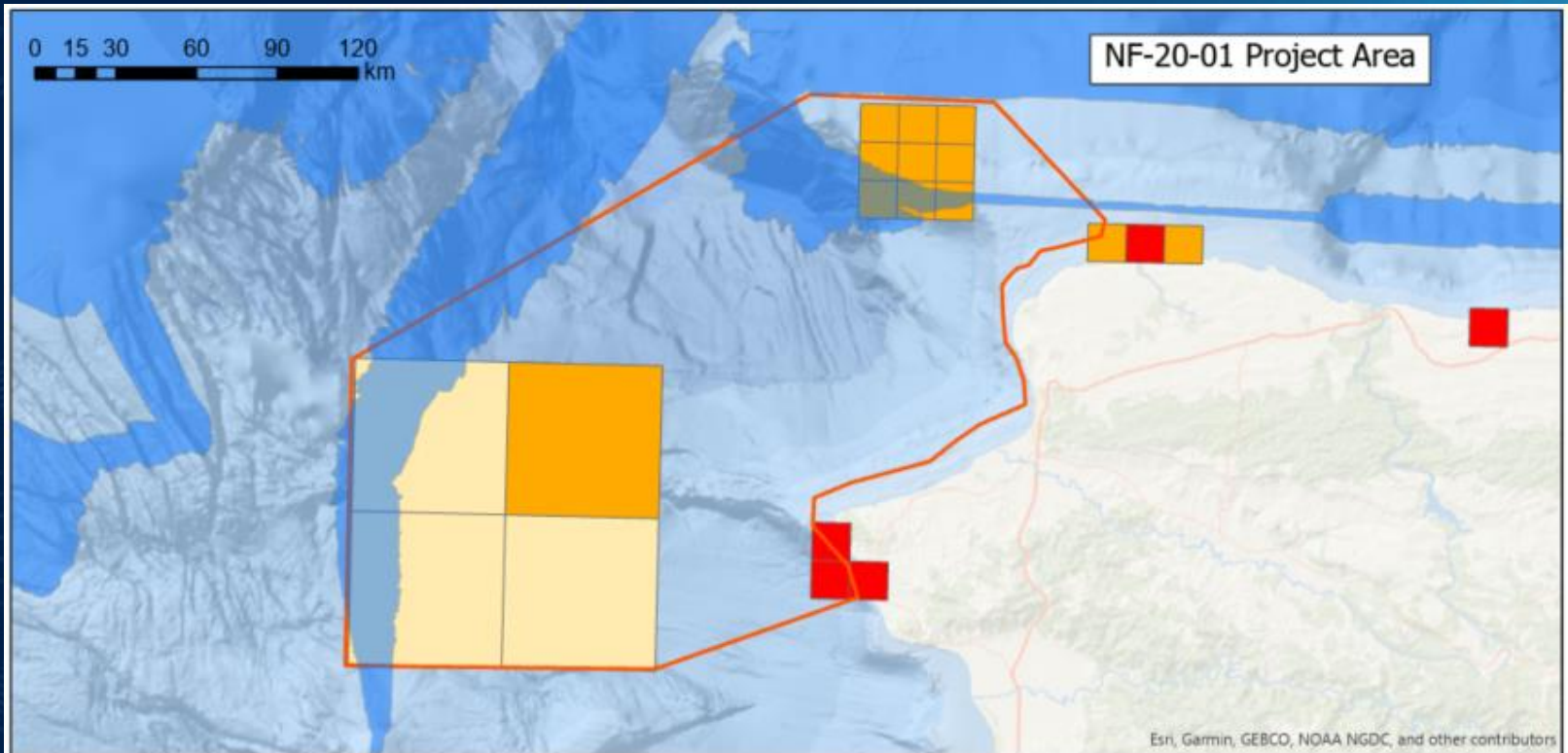
How Can Maps Be Used to Plan Missions?

Prioritization answered 4 questions important for planning:

- (1) **(Where)** What locations are important?
- (2) **(Why)** Why they are important?
- (3) **(When)** How quickly is data needed?
- (4) **(What)** What data products are needed most?



Nancy Foster 2020 Mission

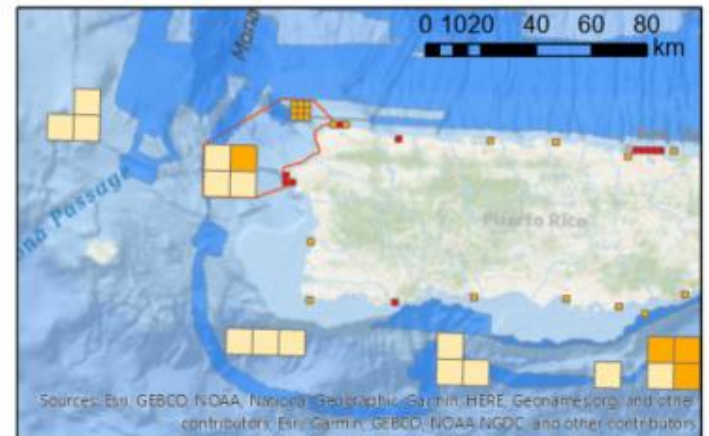


Legend

- NF-20-01 Project Area
- Mapping Footprint (2010 - Present)

Top Priorities

- Norm_total
- High
 - High (top 10%)
 - High (top 5%)



Demo: Feedback Web Tool

- All respondents who input prioritization coins will have access
- Please have all feedback completed by **January 24, 2020**
- [Demo Web Tool](#)



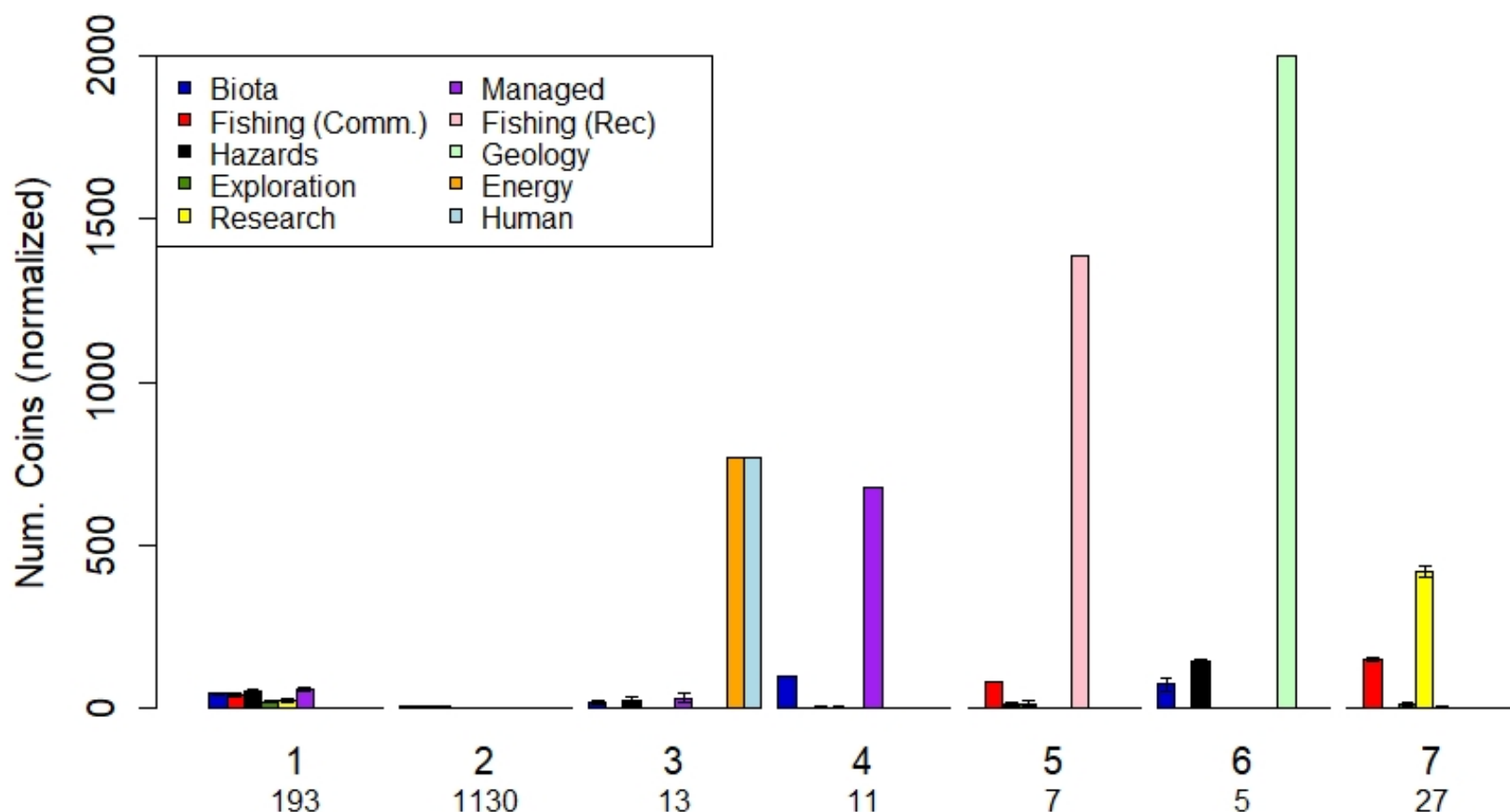
Questions?

Not a respondent and want to provide feedback? No worries! Just email Jennifer.Kraus@noaa.gov with your feedback (screen captures will be helpful).



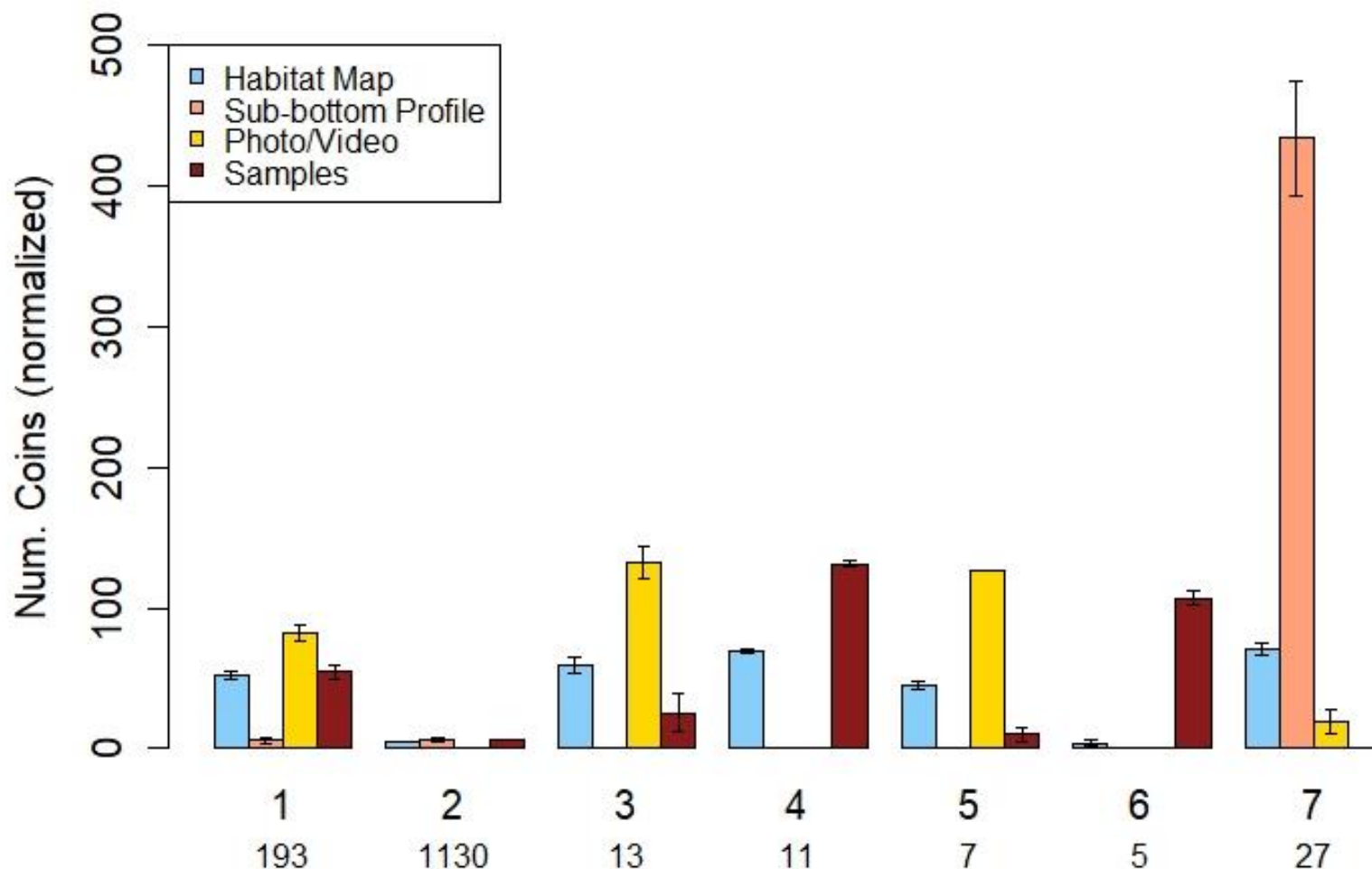
Results: Cluster Analysis Inshore

Which # Coins & Justifications were commonly clustered together?



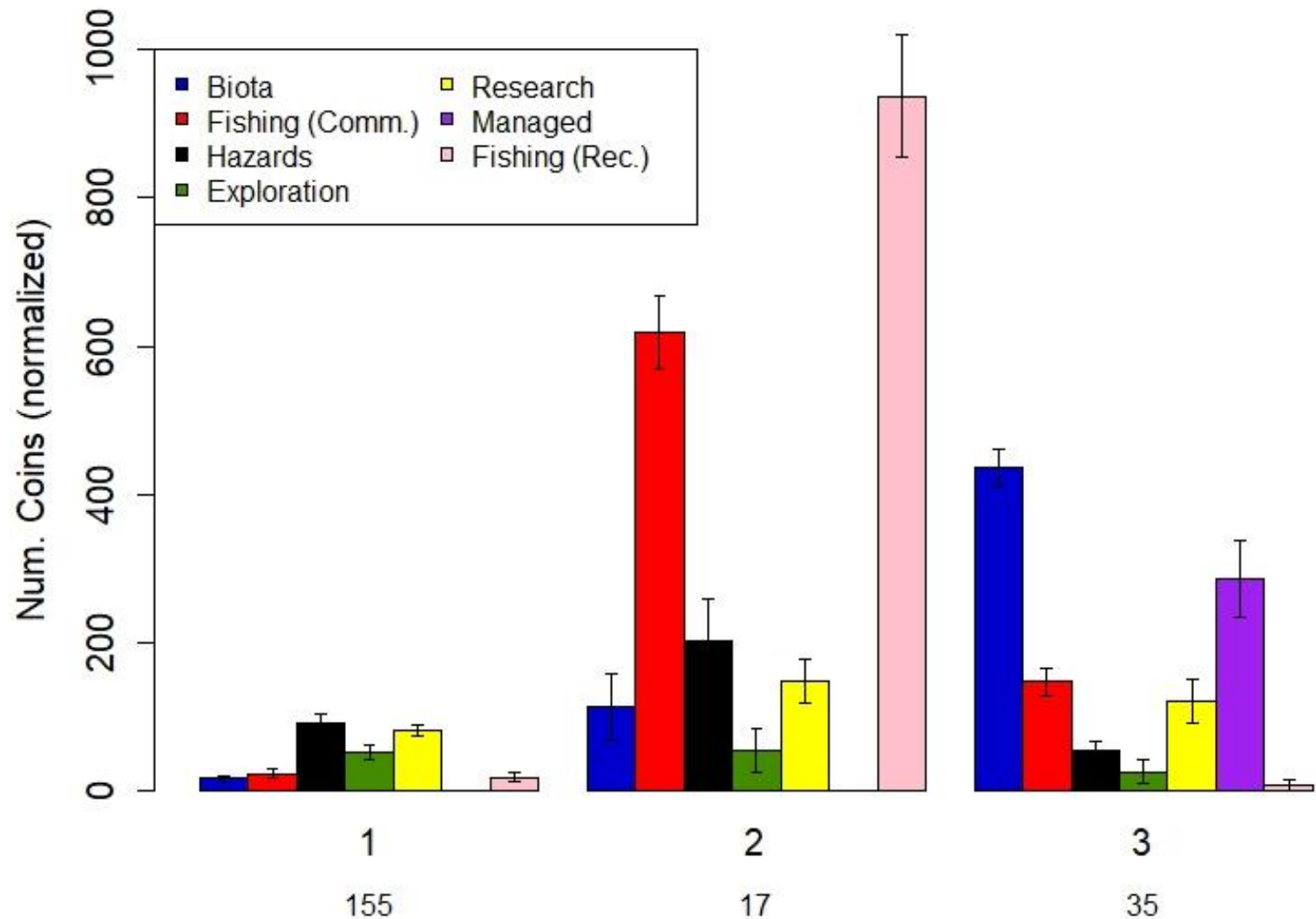
Results: Cluster Analysis Inshore

Which # Coins & Data Products were commonly clustered together?



Results: Cluster Analysis Offshore

Which # Coins & Justifications were commonly clustered together?



Results: Cluster Analysis Offshore

Which # Coins & Data Products were commonly clustered together?

